



UNIVERSIDADE FEDERAL DO OESTE DO PARÁ
INSTITUTO DE BIODIVERSIDADE DE FLORESTAS
BACHARELADO EM BIOTECNOLOGIA

ANTÔNIO VITOR CAMPÊLO RIBEIRO

**ANÁLISE DA VIABILIDADE DO GENE RDNA 28S PARA A
DELIMITAÇÃO DE ESPÉCIES DO GÊNERO *Macrobrachium***

Santarém

2019

ANTÔNIO VITOR CAMPÊLO RIBEIRO

**ANÁLISE DA VIABILIDADE DO GENE RDNA 28S PARA A
DELIMITAÇÃO DE ESPÉCIES DO GÊNERO *Macrobrachium***

Trabalho de Conclusão de Curso apresentado ao curso de graduação em Biotecnologia para obtenção do grau de Bacharel em Biotecnologia; Universidade Federal do Oeste do Pará, Instituto de Biodiversidade e Florestas.

Orientador: Prof. Dr. Gabriel Iketani Coelho

Santarém

2019

ANTÔNIO VITOR CAMPÊLO RIBEIRO

**ANÁLISE DA VIABILIDADE DO GENE 28S PARA A
DELIMITAÇÃO MOLECULAR DO GÊNERO
*Macrobrachium***

Trabalho de conclusão do curso apresentado ao curso de graduação de Biotecnologia para obtenção do grau de Bacharel em Biotecnologia; Universidade Federal do Oeste do Pará, Instituto de Biodiversidade e Florestas.

Conceito:

Data de aprovação: ____/____/____

Termo de Aprovação:

Prof. Dr. Gabriel Iketani Coelho – Orientador
Universidade Federal do Oeste do Pará – UFOPA (ICED)

Prof. Dr. Cléo Rodrigo Bressan – 1º Examinador
Universidade Federal do Oeste do Pará – UFOPA (IBEF)

Profa. Msc. Luciana Pimental da Silva – 2º Examinador
Universidade Federal do Oeste do Pará – UFOPA (ICTA)

AGRADECIMENTOS

Ao meu orientador, Gabriel Iketani, por todo suporte, paciência e dedicação em me orientar e incentivar a concluir o curso, mas principalmente por esse exemplo de professor didático e extremamente dedicado a sempre fazer além.

Aos meus amigos que fizeram dessa jornada algo muito mais doce e recheada de aprendizados, G7, Escrotos e Iridescentes, vocês são as pessoas certas.

Aos meus pais, Michel e Edinelma, por todo amor e apoio que eles me dão diariamente, mas gostaria de agradecer principalmente pelo exemplo diário de luta, esforço e carinho. Essa conquista é um presente para vocês por todos esses anos. Aos meus irmãos, Eduardo e Renato, por ter mudado minha vida no momento que nasceram. A minha família, por representarem a loucura e amor que me constitui hoje como pessoa e profissional. Obrigado todos os dias me lembrarem que a vida é difícil, mas sempre me incentivarem a buscar uma vida equilibrada.

Ao meu namorado, Adriano, por toda a paciência, por me erguer do chão todas as vezes que eu não tinha forças, mas principalmente por ajudado a descobrir o real significado de amar, de lutar juntos por um futuro melhor, não só para a gente, mas para nossas famílias e aqui inclui-se a nossa que começou a ser formada desde 08/09/2014.

A minha eterna orientadora, Iani Lauer, por ter acreditado em mim e ter me guiado a descobrir minha vocação. Tenho muito orgulho desses anos de convivência e muito trabalho. Obrigado por todas as incontáveis horas que se dedicou a mim e aos nossos projetos, mas muito obrigado por ter me escolhido comprar o desafio que era orientar alguém tão diferente. Obrigado por ter me permitido te apresentar meu mundo e muito obrigado por ter me apresentado o seu.

A todas as minhas equipes, LEDEVO, por ter me feito sentir feliz em um lugar tão fora da minha zona de conforto. Ao musicaliza por me deixar sonhar e realizar meus sonhos. A AISEC, pois eu não seria o líder que sou hoje sem ter tido a chance de errar e me desenvolver. E por fim gostaria de agradecer a todas as pessoas que contribuíram de alguma forma nessa caminhada.

RESUMO

Os crustáceos são um grupo importante ecologicamente e economicamente. A ordem dos Decápodes destaca-se por sua diversidade, mas principalmente por sua relevância no mercado, pois, dentro desse grupo estão os indivíduos mais consumidos globalmente. Entretanto, ainda há uma carência de técnicas capazes de fazer análises completas visto que atualmente a identificação é feita principalmente de forma morfológica abrindo margem para dúvidas e classificações errôneas. Uma das possíveis alternativas para sanar esse problema, prover dados seguros e gerar informações confiáveis é aliar diversas abordagens morfológicas, morfométricas, ambientais e moleculares. Com isso, a Biologia molecular começou a explorar o uso de marcadores moleculares como uma possibilidade, porém essa abordagem também enfrenta suas limitações, uma delas é a presença de heteroplasmia e pseudogenes nas sequências de nucleotídeos. Esses fatores podem levar a uma amplificação errônea das bases e conseqüentemente dados poucos seguros. Uma alternativa para sanar esse problema é fazer uso de regiões mais completas, possuindo porções conservadas e variadas, com isso, começou-se a fazer uso do gene 28S para identificação molecular desse grupo. Este trabalho visou analisar a viabilidade do gene 28S na delimitação molecular de *Macrobrachium* através de análises filogenéticas, cálculos de distância intra e interespecífica e por fim, análise do ABGD. Para isso foram obtidas e triadas 321 sequências do *Genbank* e submetidas as análises acima. O resultado da Árvore e do ABGD mostraram-se positivos, pois o agrupamento foi satisfatório reunindo todas as espécies próximas, os dados provenientes das distâncias nos confirmarem que houve a formação do *barcode gap* necessário para distinção das espécies dentro do gênero. Portanto, foi comprovada a eficiência desse marcador para discriminar espécies, uma vez que as análises se mostraram congruentes com a árvore gênica e com as distâncias inter e intraespecíficas, evidenciando a presença de um *barcode* que pode ser usado como ferramenta complementar alternativa de identificação para as espécies as quais há dificuldade de separação usando apenas dados morfológicos

Palavras-chave: Crustáceos, 28S e *barcode gap*

ABSTRACT

Crustaceans are an important ecologically and economically important group. The order of the Decapods stands out for its diversity, but mainly for its relevance in the market, because within this group are the individuals most consumed globally. However, there is still a lack of techniques capable of making complete analyzes, since the identification is mainly done in a morphological way, making room for errors and erroneous classifications. One of the possible alternatives to solve this problem, provide reliable data and generate reliable information is to combine several morphological, morphometric, environmental and molecular approaches. With this, molecular biology has begun to explore the use of molecular markers as a possibility, but this approach also faces its limitations, one of which is the presence of heteroplasmy and pseudogenes in the nucleotide sequences. These factors can lead to an erroneous amplification of the bases and consequently few insurance data. An alternative to cure this problem is to make use of more complete regions, having conserved and varied portions, with that, the use of the 28S gene for molecular identification of this group was started. This work aimed to analyze the viability of the 28S gene in the molecular delimitation of Macrobrachium through phylogenetic analyzes, intra and interspecific distance calculations and, finally, ABGD analysis. For this 321 Genbank sequences were obtained and sorted out and subjected to the above analyzes. The results of the Tree and ABGD were positive, since the grouping was satisfactory, bringing together all the species close to each other. The data from the distances confirmed that the barcode gap was necessary to distinguish species within the genus. Therefore, the efficiency of this marker to discriminate species, since the analyzes were shown to be congruent with the gene tree and with the intra and intraspecific distances, evidencing the presence of a barcode can be used as a complementary tool as an alternative identification the species that are difficult to separate using only morphological data.

Keywords: Crustaceans, 28S and barcode gap

SUMÁRIO

1. Introdução	8
2. Metodologia	12
2.1 Construção do banco de Dados.....	12
2.2 Banco de Dados	12
2.3 Análises Filogenéticas e Delimitação de Espécies	12
3. Resultados e Discussão	14
3.1 Banco de Dados	14
3.2 Análises Filogenéticas e Delimitação de Espécies	16
3.2.1 Árvore filogenética	16
3.2.2 Distâncias.....	20
3.2.3 ABGD	21
4. Conclusão.....	24
5. Referências.....	26

1. Introdução

Os crustáceos pertencem ao filo dos artrópodes, onde encontram-se espécies comestíveis bem conhecidas como os camarões, as lagostas, os caranguejos e os lagostins (Da Silva et al., 2016). Este filo engloba, aproximadamente, 52 mil espécies descritas e, segundo a classificação atualizada de Martin e Davis (2001), contém seis classes, nomeadamente: Branchiopoda, Remipedia, Cephalocarida, Maxillopoda, Ostracoda e a Malacostraca. A ordem Decapoda pertence à classe Malacostraca, se destaca, uma vez que esta reúne cerca de 18 mil espécies e agrupa os indivíduos comestíveis, sendo o maior e mais diferenciado grupo de espécies de crustáceos (HICKMAN et al., 2013; MOLTSCHANIWSKYJ, 2005).

Os camarões, foco deste trabalho, estão distribuídos em duas subordens: Dendrobranchiata e a Pleocyemata, esta, comporta 31 famílias, sendo a família Palaemonidae a segunda maior em número de espécies, distribuídas principalmente nas regiões Oriental e Neotropical do globo (DE GRAVE et al., 2008). A família Palaemonidae compreende quatro subfamílias: Typhlocaridinae, Pontoniinae, Euryrhynchinae e Palaemoninae. A primeira ocorre em águas subterrâneas e cavernícolas, da região mediterrânea, e as demais subfamílias estão amplamente distribuídas em corpos fluviais por todo o globo terrestre. Os Pontoniinae são exclusivamente marinhos, normalmente encontrados em corais e são predominantemente comensais. Os Euryrhynchinae são de água doce e ocorrem principalmente em igarapés da região amazônica. Da subfamília Palaemoninae, são conhecidas, até a presente data, sete gêneros, os quais são importantes destacar *Palaemon* e *Macrobrachium*. (BOND-BUCKUP et al., 1994; SANTOS et al., 2015).

Palaemoninae inclui camarões que habitam todos os tipos de ambientes aquáticos, desde o ambiente marinho até as águas estritamente dulcícolas (FERREIRA et al., 2010). A diversidade de ambientes ocupados se repercute na sua ampla distribuição geográfica, o que faz deste grupo um táxon muito representativo e importante, não só ecologicamente, mas também economicamente (MELO, 2003).

Fundamentado em seu valor intrínseco como patrimônio biológico, o camarão deve ser conservado pela importância ecológica compondo a base da cadeia alimentar de

outros seres, além de servirem como vetores intermediários para ciclos de vida de outros indivíduos, bem como seu valor antropogênico, ao sustentar todo um modo de vida (ALHO, 2008).

Economicamente, os camarões são um alimento muito apreciado em todo o mundo e a sua produção global (captura e aquicultura) representa mais de 50% da produção total de crustáceos. A importância crescente da carcinicultura no Brasil tem estimulado o estudo dos camarões-de-água-doce em todos os estados do país. Nos estados da região sul (Paraná, Santa Catarina e Rio Grande do Sul), o desenvolvimento da carcinicultura vem exigindo informações mais precisas sobre as espécies que ocorrem nos diversos ambientes aquáticos continentais da região, porém enfrenta a dificuldade na obtenção precisa de dados, visto que a grande maioria dos trabalhos utiliza apenas dados morfológicos (FILHO e RONÇANI, 2010).

A identificação de crustáceos apenas tendo como base a morfologia enfrenta diversos desafios, um exemplo claro disto, é o ocorre com o gênero *Macrobrachium*, tal condição deve-se ao fato da variação dos caracteres desse gênero como comprimento total, da carapaça, do quelípedo e do própodo quelar. Portanto, entre as alternativas para a resolução deste problema estão o aumento dos caracteres que são avaliados ou a junção de mais técnicas e abordagens que possam prover dados mais completos, aliando informações moleculares com dados filogenéticos e morfológicos. (PILEGGI e MANTELATTO, 2010, PILEGGI et al., 2013 e PILEGGI et al., 2014)

Nos últimos anos, com a aplicação de abordagens moleculares, associadas ao avanço da disponibilidade de dados para os camarões palaemonídeos, evidenciaram-se as limitações das classificações de base morfológica, contribuindo para o processo de delimitação de espécies e estudo das relações filogenéticas para o grupo (PILEGGI e MANTELATTO, 2010; VERGAMINI et al., 2011; ROSSI e MANTELLATO, 2013). Por exemplo, análises filogenéticas com base em dados moleculares realizadas para o gênero *Macrobrachium* evidenciam os reflexos das limitações das classificações morfológicas, além de contribuírem para o processo de identificação e discriminação de organismos morfolologicamente similares (LIU et al., 2007, PILEGGI e MANTELATTO, 2010).

O gene mitocondrial Citocromo Oxidase C subunidade I (COI) foi proposto por Hebert et al. (2003) como um marcador para identificação a nível de espécie para diversos organismos. Desde então, vários trabalhos têm confirmado sua eficácia nos mais diferentes animais como mamíferos (NGA et al., 2016), insetos (RAUPACH et al., 2010), aves e peixes (Ward, 2009), surtindo efeito inclusive para a conservação de espécies (Francis et al., 2010). Para crustáceos, Da Silva et al. (2011) e Radulovici et al. (2009) são exemplos de trabalhos robustos e eficientes utilizando a COI.

Entretanto, há presença de heteroplasmia e/ou pseudogene para COI em alguns crustáceos (SONG et al., 2008; BUHAY, 2009). Heteroplasmia é a ocorrência de duas variedades de DNA mitocondrial dentro do citoplasma de uma única célula (KMIEC et al., 2006) o que pode ser causado, por exemplo, por herança de DNA mitocondrial paterno (WHITE et al., 2008). Já os Pseudogenes ou NUMTs, são, segundo Lopez et al. (1994), cópias de genes mitocondriais incorporadas no genoma nuclear através de transposição, e por isso, perderam a capacidade de expressão. Em ambos os casos, o pressuposto da ortologia é violado (sequências parálogas são inadvertidamente tratadas como ortólogas) levando a inferências incorretas (FUNK e OMLAND, 2003) necessitando, assim, de uma análise detalhada para não serem incorporadas, ou ao menos consideradas em análises moleculares, principalmente em trabalhos de filogenia e taxonomia (WHITE et al., 2008; CALVIGNAC et al., 2011). Para o gênero *Macrobrachium*, já foram apontados indícios de heteroplasmia mitocondrial e/ou NUMTs em sequências de COI nas espécies *M. ferreirai* (ROBE et al., 2012), *M. jelskii* (MORAES, 2017), *M. brasiliense* (Ávila, 2017), já para *M. amazonicum*, tais ocorrências foram confirmadas a partir de diferentes métodos de extração de DNA e clonagem gênica por Iketani (2012). Dessa forma, tais ocorrências apontam que a COI deve, no mínimo, ser utilizada com extrema cautela.

A presença de NUMTs e heteroplasmia em *Macrobrachium* também apontam para necessidade de marcadores alternativos. Assim, uma possibilidade é o marcador rDNA 28S (DNA ribossomal 28S) que segundo Castelin (2013) tem potencial e aplicabilidade para este grupo. O rDNA 28S consiste em uma mistura de regiões conservadas e variáveis organizadas *in tandem* com centenas de cópias por genoma (HASSOUNA; MITHOT; BACHELLERIE, 1984). Chen (2009) faz uma comparação entre mtDNA 16S (DNA mitocondrial) e rDNA (DNA ribossomal) 28S e Wowor (2009)

traz uma abordagem multiloco de gerar inferências mais completas indo de encontro com a abordagem tradicional encontrada na literatura que é a uniloco.

É importante frisar que Chen et al. (2009), ao comparar as topologias obtidas a partir dos marcadores mDNA 16S e rDNA 28S para espécies de *Macrobrachium* provindas de Taiwan, expõe resultados que indicam que as análises das árvores filogenéticas derivadas do 28S tiveram uma resolução consideravelmente mais alta do que a do 16S, principalmente devido ao alto índice de transições e transversões das sequências do marcador mitocondrial, além das fracas divergências observadas. Por outro lado, a sobreposição da topologia de ambos os genes se mostraram convergentes para alguns táxons.

Diante desse cenário, surge a necessidade do desenvolvimento de ferramentas genéticas que complementem os dados apontados pela morfologia e que embasam a taxonomia. Logo, é essencial revisar a utilização da COI como marcador de identificação molecular para crustáceos bem como avaliar a viabilidade do uso do 28S como marcador molecular. Dessa forma, o objetivo desse trabalho é testar a aplicabilidade do 28S para identificação de camarões da família Palaemonidae, abrangendo espécies do gênero *Macrobrachium*.

2. Metodologia

2.1 Construção do banco de Dados

Todas as sequências foram obtidas através do *Genbank* (plataforma online de anotações de sequências de nucleotídeos) usando o acesso *Macrobrachium* + 28S. Após essa busca, foi realizada a triagem preliminar dos dados, a priori, dividindo por sequências provindas de artigos publicados e excluindo aquelas provindas de artigos não publicados. Consequente, todas as sequências foram triadas e analisadas pelos seguintes fatores: localidade e espécie.

O segundo passo da triagem envolveu uma organização mais específica das sequências, com isso, dentro do fator local foram realizadas duas subdivisões, uma macro, considerando apenas os países e uma micro, considerando territórios menores dentro do mesmo país. Para o fator Espécie, foi realizada a quantificação do número de espécies de *Macrobrachium* encontradas e posteriormente quantificado as demais espécies, devido à baixa representatividade numérica das demais sequências, criou-se um grupo denominado de “outros”. Por fim, para o fator artigo de origem, apenas foi realizada uma quantificação de sequências por artigo.

2.2 Banco de Dados

Todas sequências obtidas para *Macrobrachium* foram alinhadas e, visualmente, otimizadas (editadas quando necessário) no programa CodonCode Aligner v7.0.1 (CodonCode Corporation), o alinhamento foi feito na plataforma online MAFFT v. 7 (Disponível em <<https://mafft.cbrc.jp/alignment/server/>>) (Castresana, 2000; Talavera & Castresana, 2007).

2.3 Análises Filogenéticas e Delimitação de Espécies

A árvore filogenética foi construída através do método de agrupamento de vizinhos (NJ), baseada em distância genética simples (p), a significância dos agrupamentos foi suportada através da análise de *bootstrap* e, a partir de 1000 pseudoréplicas, foram estimadas as distâncias genéticas (distância p) entre e dentro de

cada espécie, ambas as análises foram realizadas no programa MEGA v10 (Kumar et al., 2018).

O método Automatic Barcode Gap Discovery (ABGD) (Disponível em <<http://www.wabi.snv.jussieu.fr/public/abgd/abgdweb.html>>) baseia-se na identificação das distâncias genéticas entre diferentes espécies, a partir da detecção do chamado “*barcode gap*”, estima-se então a significância do gap gerado e, posteriormente, o programa particiona os dados (Puillandre et al., 2012), o resultado gerado pelo algoritmo deve indicar uma maior divergência interespecífica, e menor intraespecífica (Da Silva, 2017). O ABGD foi executado usando distâncias simples (p) e o valor utilizado para a largura relativa do gap foi de $X=1,5$, todos os demais parâmetros foram mantidos como padrão.

3. Resultados e Discussão

3.1 Banco de Dados

Foram obtidas 321 sequências usando o acesso *Macrobrachium* + 28S. O resultado da triagem utilizando o fator Artigo resultou em 83 sequências provenientes de artigos não publicados e 238 de trabalhos publicados, distribuídas em 13 artigos, sendo que, 100 destas sequências estão concentradas em apenas um artigo de Wowor et al., (2008), seguido por Castelin et al., (2013 e 2018) com 58 e 49 sequências consecutivamente. (Tabela 1).

Tabela 1: Quantificação de espécies do gênero *Macrobrachium* para o gene 28S relacionando o artigo de origem com número de sequências depositadas, considerando apenas trabalhos publicados.

NOME	QUANTIDADE DE SEQUÊNCIAS
BRACKEN et al., 2010	1
CHEN et al., 2009	1
Direct Submission	1
KOU et al., 2013	2
VON RINTELEN et al., 2012	2
PORTER et al., 2005	2
LU et al., 2009	3
CUTMORE et al., 2013	4
AZNAR-CORMANO et al., 2015	6
FUKE et al., 2018	9
CASTELIN et al., 2018	49
CASTELIN et al., 2013	58
WOWOR et al., 2008	100
TOTAL	238

Foram identificadas 64 espécies, destas, 58 pertencentes ao gênero *Macrobrachium* e 6 aos gêneros *Palaemon*, *Expopalaemon* e *Pseudophyllodistomum*. As espécies com maior representatividade, que detém 125 das 238 das sequências publicadas, são: *Macrobrachium rosenbergii* (7), *Macrobrachium australe* (56) e *Macrobrachium lar* (65).

No fator Local, foram obtidas sequências de 12 países, principalmente da região asiática. Destacando-se Indonésia com 26 sequências, China com 22, Japão com 17 e Malásia com 16, representando 81 das 119 sequências com locais informados. Por fim,

não foi possível determinar o local de origem de 119 das sequências, pois não havia informações suficientes para esta identificação no *GenBank* e/ou no artigo (Tabela 2).

Tabela 2: Lista de locais relacionado a quantidade de sequências dos artigos publicados para o gênero *Macrobrachium* com o gene 28S.

LOCAL	QUANTIDADE DE SEQUÊNCIAS
Laos	2
Camboja	3
Tailândia	4
Austrália	4
Vietnã	4
Singapura	8
Taiwan	11
Malásia	16
China	22
Indonésia	26
Japão	17
Índia	2
Local não informado	119
TOTAL	238

Após construção do banco de dados e do alinhamento das sequências, formaram-se cinco grupos. O grupo D1-D2 é composto por 251 sequências, seguido das duas partições do grupo D4, com 31 e 21 espécies em cada. Os outros dois grupos foram pouco representativos e juntos correspondem a apenas oito sequências majoritariamente das espécies *Macrobrachium rosenbergii* e *Macrobrachium potuina*, infelizmente, não foi possível identificar a qual região de 28S essas sequências pertencem (Tabela 3).

É importante frisar que Sonnberg (2007) cita e explora a importância da região D1-D2 devido a variabilidade de 28S, bem como permite a aplicação do *barcoding gap* para *Metazoa*. Além disso, ainda aponta essa região como potencial para substituir a região comumente usada que é a D3-D4, pois infere que os resultados obtidos na região D1-D2 possuem uma melhor resolução oferecendo assim inferências mais completas. Além disso, ainda reforça que uso dessa região é importante para colocar as sequências no contexto filogenético correto.

Tabela 3: Resultado dos grupos formados pós alinhamentos baseado em sua região de origem

GRUPO	NÚMERO DE SEQUÊNCIAS	PRINCIPAIS ESPÉCIES
D1D2	251	<i>Macrobrachium lar</i>
D4.1	31	<i>Macrobrachium placidulum</i>
D4.2	21	<i>Macrobrachium rosenbergii</i>
Contig 4	8	<i>Macrobrachium rosenbergii</i>
Contig 8	2	<i>Macrobrachium rosenbergii</i>

3.2 Análises Filogenéticas e Delimitação de Espécies

3.2.1 Árvore filogenética

A árvore gerada para o primeiro grupo do D4 agrupou corretamente a maioria das espécies, sendo que houve a formação do clado composto por *M. sp* e *M. clymene* que pode indicar uma maior proximidade entre essas espécies. Com isso, podemos ter como hipótese que esta sequência não identificada a nível de espécie (*sp.*) possa ser um *M. clymene*. Porém, para a confirmação, seria necessário a realização de outras análises moleculares, pois essa espécie é originária da Malásia e é comumente associada a *M. leucodactylus* de acordo com Worrer (2009) (Figura 1).

O único resultado da árvore que difere do ABGD refere-se ao clado de *M. placidulum* com a inserção de *M. tolmerum*, isto pode ser explicado pelo fato das partições do ABGD constituírem uma análise inicial, portanto *M. tolmerum* distinguiu-se em um grupo somente baseado no algoritmo usando pelo programa (Figura 1).

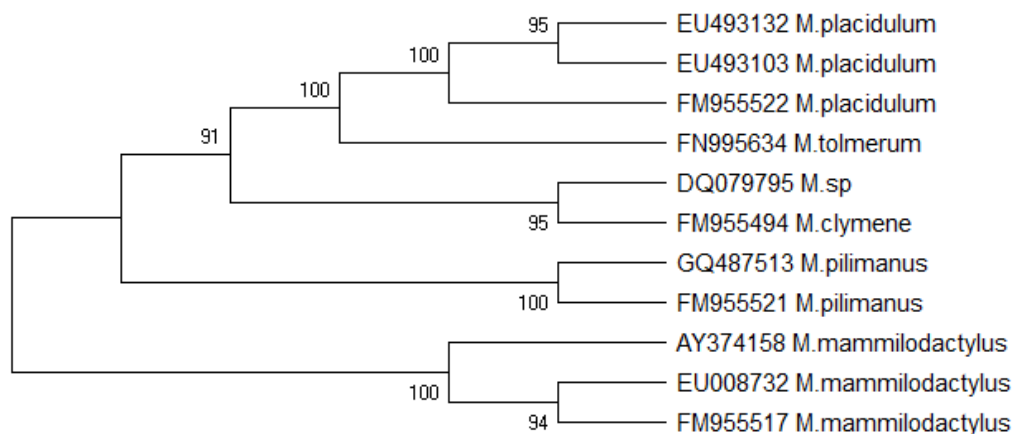


Figura 1. Árvore filogenética de agrupamento de vizinhos (NJ) para a região rDNA 28S, baseada na distância p , para espécies pertencentes ao gênero *Macrobrachium* região D4.1. Os números em cada ramificação indicam os valores de *bootstrap*.

O grupo D4.2, apesar de se dividir em outros dois grandes grupos, não possui apoio estatístico significativo, visto que clados formados estão apoiados em nós de respectivamente 8 e 41, ou seja, pouco significativo (Figura 2). A análise dessa árvore entra em concordância com o resultado obtido no ABDG, o qual indicou a impossibilidade de distinção de grupos dentro da partição, apesar de ter agrupado corretamente todas as espécies.

Para o grupo D1-D2 o resultado da árvore foi majoritariamente preciso e com apoio estatístico, variando de 86 a 99 nos nós principais, mostrando a eficácia do 28S para a diferenciação de espécies desse gênero (Figura 3). Sonnenberg *et al.*, (2007) ressalta o potencial desse marcador para identificação molecular pois possui partes conservadas e variáveis. Este autor ainda ressalta que um marcador eficiente é aquele que consegue diferenciar até as espécies com maior proximidade genética. Hirai *et al.*, (2013) apresentam em seu trabalho a eficiência do 28S para diferenciação molecular a nível de espécie, enfatizam a alta qualidade do produto da PCR e ainda exibem que em comparação ao resultado da COI, o 28S apresenta resultados mais coerentes.

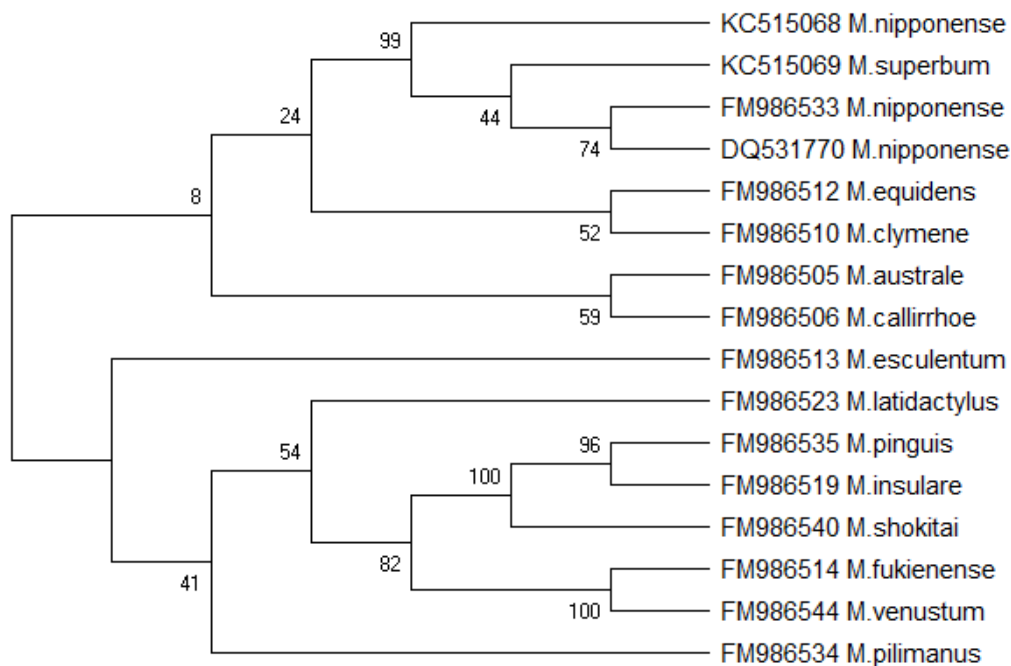


Figura 2. Árvore filogenética de agrupamento de vizinhos (NJ) para a região rDNA 28S, baseada na distância p , para espécies pertencentes ao gênero *Macrobrachium* região D4.2. Os números em cada ramificação indicam os valores de *bootstrap*.

Obteve-se um clado formado por três sequências de *M. rosenbergii* e uma de *M. dacqueti*, esse agrupamento já possui explicações claras na literatura. Wowor e Ng (2001) sugeriram baseado em dados morfológicos e morfométricos que havia necessidade de elevação a nível de espécie dessas duas subespécies à época. Wowor (2007 e 2008) relata o agrupamento de *M. dacqueti* com *M. rosenbergii* e sugere que esse agrupamento, na verdade, se deve ao fato de uma divergência na nomenclatura envolvendo essas espécies, a qual ela elucidada nesses trabalhos.

A única espécie que agrupou de forma inesperada foi a *M. asperulum*, pois teve suas três sequências dispersas em clados diferentes com suporte estatístico variando de 73 a 98. Liu et al., (2011) fornece uma hipótese para essa diferenciação, baseada no surgimento de uma barreira física que causou isolamento geográfico temporário. Os padrões de distribuição da fauna de água doce nesta ilha certamente foram moldados por eventos geológicos e oscilações climáticas (Yang e Tzeng, 1986).

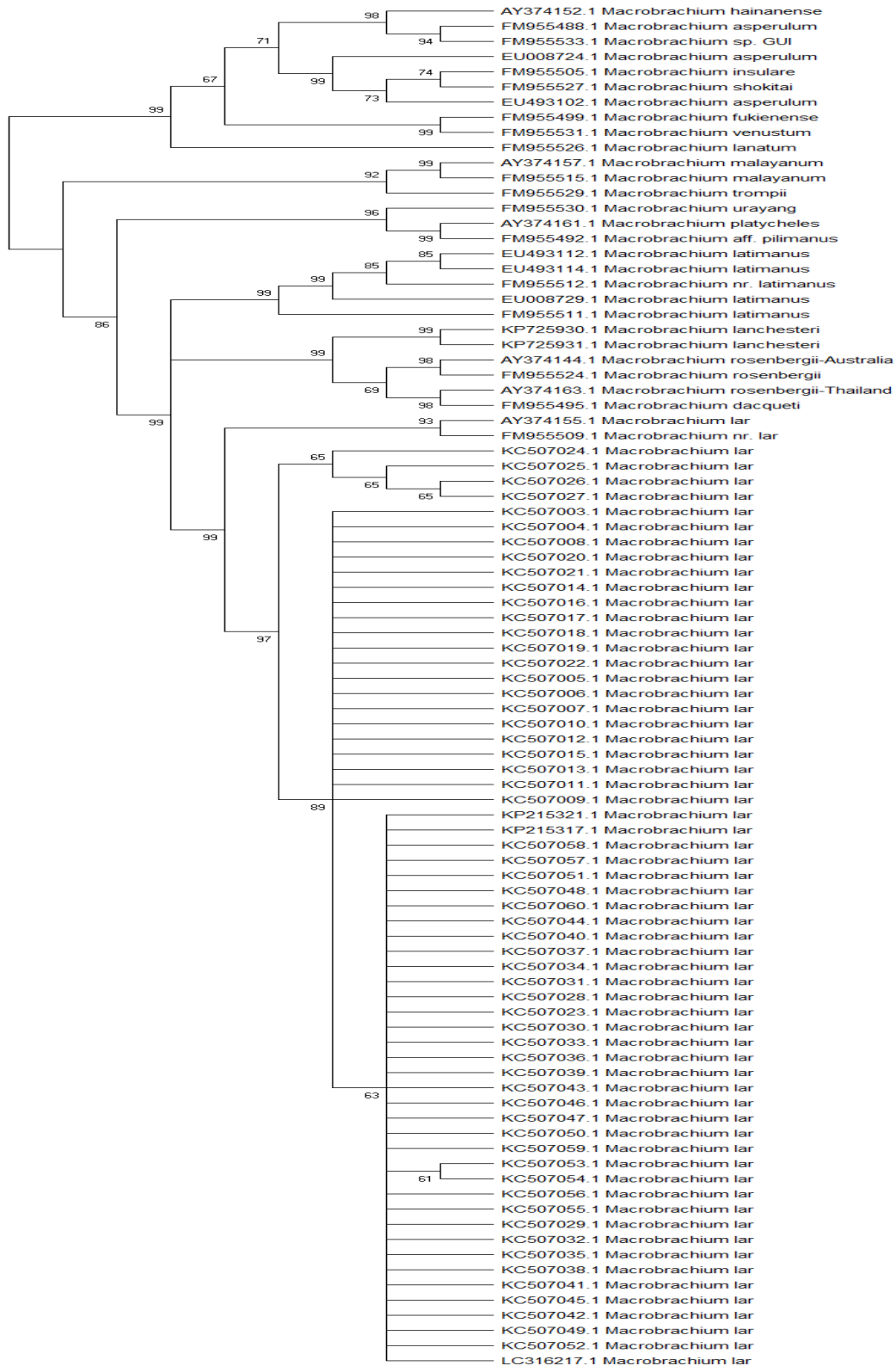


Figura 3. Árvore filogenética de agrupamento de vizinhos (NJ) para a região rDNA 28S, baseada na distância p , para espécies pertencentes ao gênero *Macrobrachium* região D1-D2. Os números em cada ramificação indicam os valores de *bootstrap*.

3.2.2 Distâncias

Os valores obtidos para as distâncias intra e interespecíficas (Tabela 4) corroboram com os dados previamente apresentados. Por exemplo, para distância máxima do grupo D1-D2 tivemos um outlier com 6,25%. Analisando essa espécie, podemos supor através dos dados já apresentados sobre o *M. asperulum* que essa alta divergência dentro da espécie pode ser relacionada a separação da espécie pela barreira geográfica, consequentemente dando um valor tão alto e fora do padrão. Por isso, ele foi desconsiderado e o segundo valor foi tido como principal. No mais, os valores mínimos e máximos para distância intraespecífica convergem com a literatura. De acordo com, Aznar-Cormano (2015) não foi encontrada variação intraespecífica para 28S. Comparativamente, dos 6 resultados obtidos neste trabalho 2 foram 0%, 2 n/c (não calculado) e apenas para o grupo D1-D2 e para D4-1 conseguiu-se detectar variação dentro da espécie, fato esse que pode ser explicado pela diversidade de locais de origem das sequências, mesmo que lidem da mesma espécie (Tabela 4).

Na literatura ainda não é possível encontrar um valor padrão para 28S porém, Hebert e Hogg (2013) e Hebert et al., (2003) propõem 2% de distância para sequências similares. Figueiredo (2015) obteve para o gene da COI uma variação intra de 0 a 2,5% e inter de 4,9% a 23,6%. Já para 16S apresentou uma distância interespecífica nula e intraespecífica de 0 a 3%. No presente estudo, é possível que a distância intraespecífica possa estar subestimada visto que existem muitas espécies com apenas uma sequência como representante. A distância interespecífica obtida está dentro do padrão do grupo tendo como outlier apenas a distância máxima do grupo D4-1 que obteve 36%. É importante frisar que o valor obtido ao comparar *M. lar* e *M. lepidactyloides* foi inesperado visto que não se espera que espécies distintas tenham 0% de distância interespecífica. Ao analisar o banco de dados e a literatura, é possível inferir que essas sequências, possam ter sido identificadas e depositadas erroneamente, porém Sonnenberg (2007) discute que a depender do método usado para eliminação de bases ambíguas o resultado pode variar. (Tabela 4).

Tabela 4: Distâncias intra e interespecífica com valores mínimos e máximos, para as regiões D1-D2, D4.1 e D4.2 do gênero *Macrobrachium* para o gene 28S.

Nível Taxonômico	Distância Mínima			Distância Máxima		
	D1-D2	D4-1	D4-2	D1-D2	D4-1	D4-2
Intraespecífica	0,0%	0,0%	NC	0,88 (6,25%*)	0,2%	NC
Interespecífica	1,0%	2,0%	1,0% (0,0%**)	25%	36%	23%

*Valor obtido ao comparar diferentes sequencias de *M. asperulum*

**Valor obtido ao comparar *M. lar* e *M. lepidactyloides*

3.2.3 ABGD

D1D2

Foram obtidas 11 partições, sendo nove iniciais e duas recursivas, com variação da distância p entre 0,1 e 0,001, com a formação de 26 a 2 grupos. A partição mais coerente é o inicial 3, pois agrupa mais as espécies semelhantes e possui menos divergências, corroborando com a árvore filogenética. Além disso, a análise do histograma demonstra a formação clara de um *gap* entre 0,02 e 0,06 demonstrando a clara diferenciação dos indivíduos (Figura 4 e 5).

Smithet *et. al.*, 2005 e De Salle 2006, reforçam que o resultado depende da diferenciação do *gap*, isso pode ser indicativo de uma nova espécie e de que a tecnologia do *barcoding gap* é uma ótima ferramenta para análises iniciais. Puillandre et al., (2012) enfatiza que a análises das partições não deve ser tida como uma diferenciação final e sim como uma hipótese inicial. Além disso, reforça a necessidade de analisar o *output* do ABDG fazendo uso de dados complementares e pré-existentes, como espécies previamente definidas, outros estudos de códigos de barras que identificaram um valor de divergência anterior para a mesma taxa ou um grupo estreitamente relacionado, ou quaisquer outros dados disponíveis para as espécies estudadas (Figura 4 e 5).

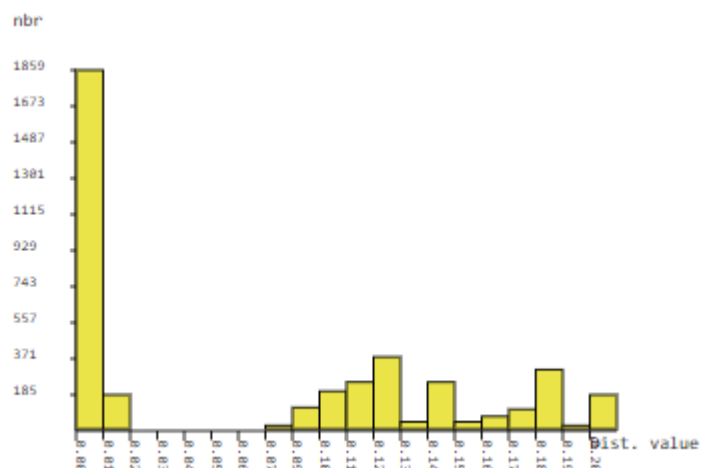


Figura 4. Gráfico resumindo os resultados do ABGD para o marcador nuclear rDNA 28S região D1-D2 mostrando a distribuição de distâncias genéticas e de “barcode gaps” para espécies do gênero *Macrobrachium*

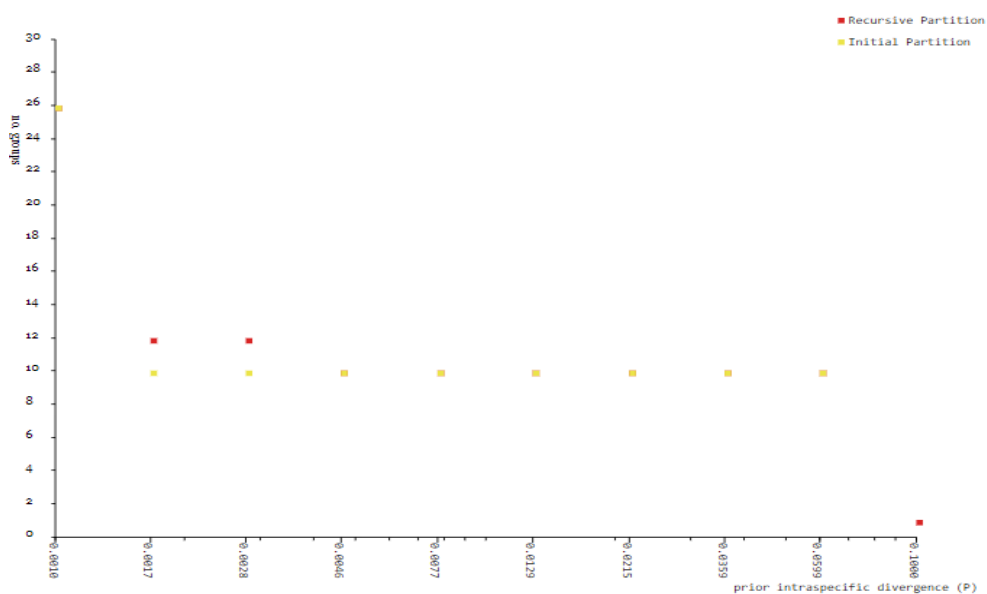


Figura 5. Gráfico resumindo os resultados do ABGD para o marcador nuclear rDNA 28S região D1-D2, registrando o número de grupos para as partições primárias e recursivas geradas pelo ABGD como função do limite de divergência intraespecífica das espécies

D4.1

Foram obtidas dez partições, sendo nove iniciais e uma recursiva, com variação da distância p entre 0,1 e 0,001, com a formação de 1 a 5 grupos. A partição mais coerente é o inicial 1. A única diferença entre a árvore e esse resultado está no agrupamento do *M.*

tolmerum, visto que no ABDG foi tido como grupo único enquanto que a árvore o agrupou com *M. placidulum*. A análise do histograma demonstra a formação clara de um *gap* entre 0,03 a 0,07 deixando clara a diferenciação dos indivíduos (Figura 6 e 7).

Nesses casos D1D2 e D4.1, pode-se observar a maior consistência das partições iniciais, que corresponderam aos agrupamentos observados na árvore de agrupamento de vizinhos. Segundo Yang *et al.* (2016), os resultados do ABGD podem ser influenciados pelo valor empregado para a largura relativa do *gap*, nesse sentido o valor de $X=1,5$ superestimou o número de grupos observados nas partições iniciais (Figura 6 e 7).

De acordo com Puillandre *et al.*, (2012) na presença de um conjunto de dados de referência com espécies previamente caracterizadas, as espécies de um organismo podem ser automaticamente identificadas usando sua sequência de código de barras, por isso torna-se tão relevante o aparecimento desses *gaps*.

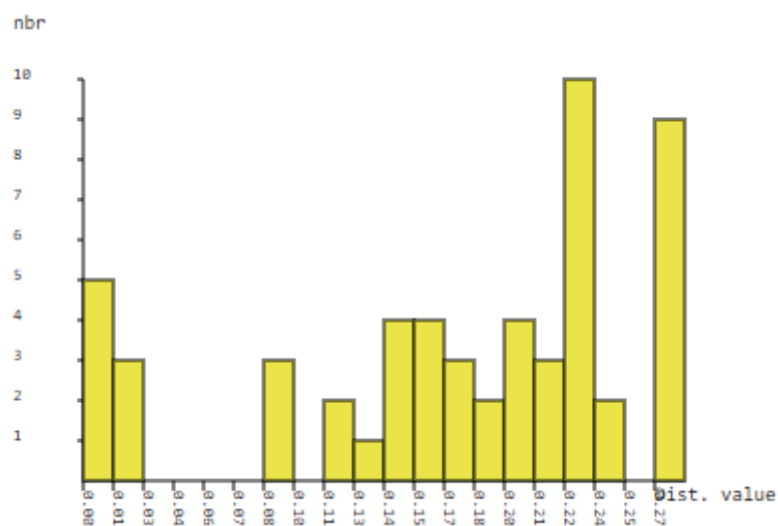


Figura 6. Gráfico resumindo os resultados do ABGD para o marcador nuclear rDNA 28S região D4.1 mostrando a distribuição de distâncias genéticas e de “barcode gaps” para espécies do gênero *Macrobrachium*

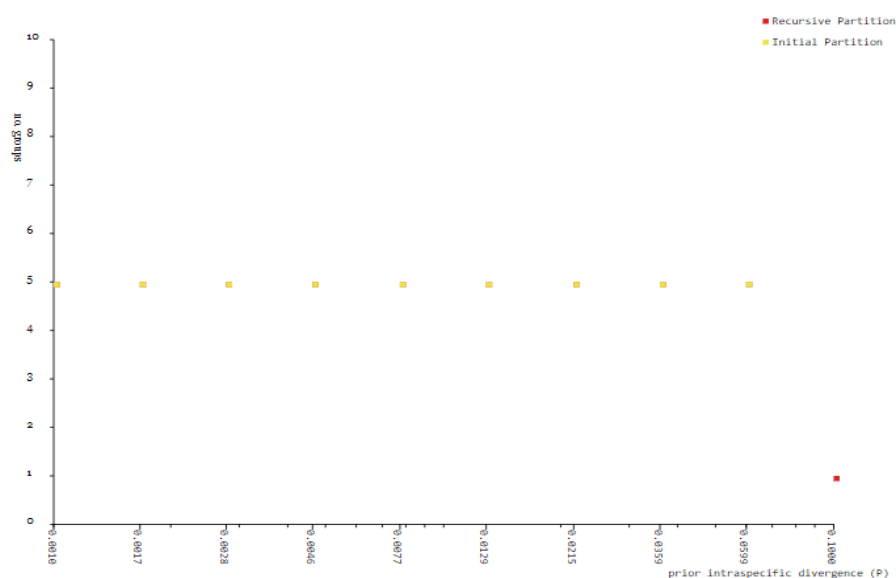


Figura 7. Gráfico resumindo os resultados do ABGD para o marcador nuclear rDNA 28S região D4.2, registrando o número de grupos para as partições primárias e recursivas geradas pelo ABGD como função do limite de divergência intraespecífica das espécies

D4.2

Não houve a formação de grupos no ABGD, o que sugere que as espécies são tão próximas que não foi possível a separação em grupos e por isso não gerou o *output* com as partições. A árvore demonstra algo similar, visto que a separação baixa valores de *bootstrap*.

4. Conclusão

Os resultados suportaram a consistência do status taxonômico do gênero analisados topologia observada correspondeu, de forma geral, com as análises do ABGD e com as distâncias genéticas calculadas, com poucas divergências como discutido anteriormente. Comparando o padrão da distribuição da divergência genética entre e dentro das espécies, ficou evidente a presença de um *barcode gap*. Mesmo o 28S apresentando baixa variabilidade no caso de algumas espécies, os resultados obtidos nesse trabalho comprovam sua aplicabilidade em substituição ao COI, mas, é importante estabelecer que a busca de marcadores nucleares mais variáveis é de extrema importância para auxiliar no melhor entendimento do comportamento taxonômico da subfamília

Palaemoninae. Portanto, foi suportada a eficiência desse marcador para discriminar espécies servindo como uma ferramenta complementar de identificação para as espécies.

5. Referências

- ALHO, Cleber José Rodrigues. Biodiversity of the Pantanal: response to seasonal flooding regime and to environmental degradation. *Brazilian Journal of Biology*, v. 68, n. 4, p. 957-966, 2008.
- Ávila FF. (2017). Identificação molecular de camarões de água doce (Decapoda, Palaemonidae) do baixo amazonas (Dissertação de Mestrado, Brasil).
- AZNAR-CORMANO, L. et al. An improved taxonomic sampling is a necessary but not sufficient condition for resolving inter-families relationships in Caridean decapods. *Genetica*, v. 143, n. 2, p. 195-205, 2015.
- Bond-Buckup, G., and L. Buckup. 1994. A família Aeglidae (Crustacea, Decapoda, Anomura). *Arquivos de Zoologia* 32: 159-347.
- Buhay JE. (2009). “COI-like” sequences are becoming problematic in molecular systematic and DNA barcoding studies. *Journal of Crustacean Biology*, 29(1), 96-110.
- Calvignac S, Konecny L, Malard F, Douady CJ. (2011). Preventing the pollution of mitochondrial datasets with nuclear mitochondrial paralogs (numts). *Mitochondrion*, 11(2), 246-254.
- Castelin, M., Feutry, P., Hautecoeur, M., Marquet, G., Wowor, D., Zimmermann, G., Keith, P., 2013. New insight on population genetic connectivity of widespread amphidromous prawn *Macrobrachium lar* (Fabricius, 1798) (Crustacea: Decapoda: Palaemonidae). *Mar. Biol.* 160, 1395–1406. <https://doi.org/10.1007/s00227-013-2191-y>.
- Castresana, J., 2000. Selection of conserved blocks from multiple alignments for their use in phylogenetic analysis. *Nat. Nat. Proc. R. Soc. Lond. B Bioinforma. Nucleic Acids Res. Trends Biol. Sci. Maddison, Phylogeny Character Evol. Mol. Biol. Evol* 390, 31–32.
- Chen, R.T., Tsai, C.F., Tzeng, W.N., 2009. 16S and 28S rDNA Sequences in Phylogenetic Analyses of Freshwater Prawns (*Macrobrachium* Bate, 1868) from Taiwan. *J. Crustac. Biol.* 29, 400–412. <https://doi.org/10.1651/08-3069.1>.
- Da Silva JM, Creer S, Dos Santos A, Costa AC, Cunha MR, Costa FO, Carvalho GR. (2011). Systematic and evolutionary insights derived from mtDNA COI barcode diversity in the Decapoda (Crustacea: Malacostraca). *PLoS one*, 6(5), e19449.
- DA SILVA, Catarina Ribeiro. Desenvolvimento de métodos moleculares para a diferenciação de espécies de crustáceos em alimentos. 2016.
- Da Silva, D.J.F., 2017. Delimitação molecular de espécies de pargos vermelhos (Lutjanidae – Perciformes) do atlântico. Dissertação de Mestrado, 55.
- DE FIGUEIREDO, Carla Kühn. Variação morfológica e análise da distribuição do caranguejo *Pyromaia tuberculata* Lockington, 1877 (Crustacea: Decapoda). 2015. Tese de Doutorado. Universidade de São Paulo.

De Grave S, Cai Y, Anker A. (2008). Global diversity of shrimps (Crustacea: Decapoda: Caridea) in freshwater, 595:287–293.

De Salle R, Egan MG, Siddall M. (2005). The unholy trinity: taxonomy, species delimitation and DNA barcoding. *Philosophical Transactions of the Royal Society of London B: Biological Sciences*, 360 (1462), 1905-1916.

Ferreira, R.S., Vieira, R.R.R., D’Incao, F., 2010. The marine and estuarine shrimps of the Palaemoninae (Crustacea: Decapoda: Caridea) from Brazil. *Zootaxa* 24, 1–24.

Francis CM, Borisenko AV, Ivanova NV, Eger JL, Lim BK, Guillén-Servent A, Hebert PDN. (2010). The role of DNA barcodes in understanding and conservation of mammal diversity in southeast asia. *PLoS One*, 5(9).

FUNK, Daniel J.; OMLAND, Kevin E. Species-level paraphyly and polyphyly: frequency, causes, and consequences, with insights from animal mitochondrial DNA. *Annual Review of Ecology, Evolution, and Systematics*, v. 34, n. 1, p. 397-423, 2003.

Hassouna, N., Michot, B., Bachellerie J.P., 1984. *Nucleic Acids Research*. *Nucleic Acids Res.* 36, ii–ii. <https://doi.org/10.1093/nar/gkn907>.

Hickman, C. P., Roberts, L. S., Keen, S. L., Eisenhour, D. J., Larson, A., & l'Anson, H. (2011). Crustaceans. In *Integrated Principles of Zoology* 15th ed., (pp. 421-443). New York: McGraw-Hill.

HICKMAN, C.L.; ROBERTS, L.S.; LARSON, A. *Princípios integrados de Zoologia*. Rio De Janeiro: Editora Guanabara Koogan S.A., 2013.

HOGG, Ian D.; HEBERT, Paul DN. Biological identification of springtails (Hexapoda: Collembola) from the Canadian Arctic, using mitochondrial DNA barcodes. *canadian Journal of Zoology*, v. 82, n. 5, p. 749-754, 2004.,

Iketani G. (2012). *Desenvolvimento e Aplicação de Marcadores Moleculares Mitocondriais em Camarões de Água Doce do Gênero *Macrobrachium* (Decapoda: Palaemonidae)* (Tese de Doutorado, Brasil).

Kmiec B, Woloszynska M, Janska H. (2006). Heteroplasmy as a common state of mitochondrial genetic information in plants and animals. *Current genetics*, 50(3), 149-159.

Kumar, S., Stecher, G., Li, M., Knyaz, C., Tamura, K., 2018. MEGA X: Molecular Evolutionary Genetics Analysis across Computing Platforms. *Mol. Biol. Evol.* 35, 1547–1549. <https://doi.org/10.1093/molbev/msy096>.

Liu, M., Cai, Y., Tzeng, C., 2007. Molecular Systematics of the Freshwater Prawn Genus. *Zool. Stud.* 46, 272–289.

Lopez JV, Yuhki N, Masuda R, Modi W, O'Brien SJ. (1994). Numt, a recent transfer and tandem amplification of mitochondrial DNA to the nuclear genome of the domestic cat. *Journal of Molecular Evolution*, 39(2), 174-190.

Melo, G., A., S., 2003. Manual de Identificação dos Crustacea Decapoda de Água Doce do Brasil. Edições Loyola, São Paulo.

Moltschaniwskyj, N. A. (2005). Edible Shellfish. In *Handbook of Food Science, Technology, and Engineering - 4 Volume Set*: Boca Raton: CRC Press.

Moraes SASN. (2017). Variabilidade fenotípica e genotípica do camarão *Macrobrachium jelskii* (Miers, 1877) das bacias do noreste brasileiro: uma abordagem de sistemática integrativa. (Dissertação de Mestrado, Brasil).

Nga T, Anh T, Huyen D, Son N, Thong V, Sang N, Thanh H. (2016). Assessment of Genetic Relationship of some Horseshoe Bats (Chiroptera: Rhinolophidae) in Vietnam Using Cytochrome oxidase Subunit I (COI) Gene Sequence. *VNU Journal Of Science: Natural Sciences And Technology*, 32 (1S).

Pileggi, L.G., Magalhães, C., Bond-Buckup, G., Mantelatto, F.L., 2013. New records and extension of the known distribution of some freshwater shrimps in Brazil. *Rev. Mex. Biodivers.* 84, 563–574. <https://doi.org/10.7550/rmb.30504>

Pileggi, L.G., Mantelatto, F.L., 2010. (Decapoda, Palaemonidae), with emphasis on the relationships among selected American species. *Invertebr. Syst.* 24, 194. <https://doi.org/10.1071/IS09043>

Pileggi, L.G., Rossi, N., Wehrmann, I.S., Mantelatto, F.L., 2014. Molecular perspective on the American transisthmian species of *Macrobrachium* (Caridea, Palaemonidae). *Zookeys* 131, 109–131. <https://doi.org/10.3897/zookeys.457.6818>

Puillandre, N., Modica, M. V., Zhang, Y., Sirovich, L., Boisselier, M.C., Cruaud, C., Holford, M., Samadi, S., 2012. Large-scale species delimitation method for hyperdiverse groups. *Mol. Ecol.* 21, 2671–2691. <https://doi.org/10.1111/j.1365-294X.2012.05559.x>

Radulovici AE, Sainte-Marie B, Dufresne F. (2009). DNA barcoding of marine crustaceans from the Estuary and Gulf of St Lawrence: a regional-scale approach. *Molecular Ecology Resources*, 9, 181-187.

Raupach MJ, Astrin JJ, Hannig K, Peters MK, Stoeckle MY, Wägele JW. (2010). Molecular species identification of Central European ground beetles (Coleoptera: Carabidae) using nuclear rDNA expansion segments and DNA barcodes. *Frontiers in zoology*, 7 (1), 26.

Robe LJ, Machado S, Bartholomei-Santos ML. (2012). The DNA barcoding and the caveats with respect to its application to some species of Palaemonidae (Crustacea, Decapoda). *Zoological science*, 29(10), 714-724. Ruiz

RONÇANI, Liara Darabas; GOULARTI FILHO, Alcides. A trajetória recente da economia catarinense (2000-2010): na contramão do crescimento?. *Acta Scientiarum. Human and Social Sciences*, v. 37, n. 1, p. 53-64, 2015.

Rossi, N., Mantelatto, F.L., 2013. Molecular Analysis of the Freshwater Prawn *Macrobrachium olfersii* (Decapoda, Palaemonidae) Supports the Existence of a Single Species throughout Its Distribution. *PLoS One* 8, 1–13. <https://doi.org/10.1371/journal.pone.0054698>.

SANTOS, Sandro et al. Three New Species of Aeglidae (Aegla) from Paraná State, Brazil. *Journal of Crustacean Biology*, v. 35, n. 6, p. 839-849, 2015.

Song H, Moulton MJ, Hiatt KD, Whiting MF. (2013). Uncovering historical signature of mitochondrial DNA hidden in the nuclear genome: the biogeography of *Schistocerca* revisited. *Cladistics*, 29(6), 643-662.

Sonnenberg, R., Nolte, A., Tautz, D., 2007. An evaluation of LSU rDNA D1-D2 sequences for their use in species identification. *Front. Zool.* 4, 1–12. <https://doi.org/10.1186/1742-9994-4-6>.

Talavera, G., Castresana, J., 2007. Improvement of phylogenies after removing divergent and ambiguously aligned blocks from protein sequence alignments. *Syst. Biol.* 56, 564–577. <https://doi.org/10.1080/10635150701472164>

Vergamini, F.G., Pileggi, L.G., Mantelatto, F.L., 2011. Genetic variability of the Amazon River prawn *Macrobrachium amazonicum* (Decapoda, Caridea, Palaemonidae). *Contrib. to Zool.* 80, 67–83.

Ward RD. (2009). DNA barcode divergence among species and genera of birds and fishes. *Molecular ecology resources*, 9 (4), 1077-1085

White DJ, Wolff JN, Pierson M, Gemmell NJ. (2008). Revealing the hidden complexities of mtDNAe inheritance. *Molecular Ecology*, 17(23), 4925-4942. Williams

Wowor, D., Muthu, V., Meier, R., Balke, M., Cai, Y., Ng, P.K.L., 2009. Evolution of life history traits in Asian freshwater prawns of the genus *Macrobrachium* (Crustacea: Decapoda: Palaemonidae) based on multilocus molecular phylogenetic analysis. *Mol. Phylogenet. Evol.* 52, 340–350. <https://doi.org/10.1016/j.ympev.2009.01.002>

WOWOR, D.; NG, P. K. L. Identity of the Giant Prawn, *Macrobrachium rosenbergii* (De Man, 1879)(Crustacea: Decapoda: Caridea: Palaemonidae). In: *Proceedings of the Fifth International Crustacean Congress, Melbourne, Australia. 2001.* p. 9-13.

YANG, D. C. H.; TZENG, S. W. Simplification and linearization of manipulator dynamics by the design of inertia distribution. *The International journal of robotics research*, v. 5, n. 3, p. 120-128, 1986.

HEBERT, Paul DN et al. Biological identifications through DNA barcodes. *Proceedings of the Royal Society of London. Series B: Biological Sciences*, v. 270, n. 1512, p. 313-321, 2003.

8. Anexos

Anexo 1

Normas da revista

BIOCHEMICAL SYSTEMATICS AND ECOLOGY

DESCRIPTION

Biochemical Systematics and Ecology is devoted to the publication of original papers and reviews, both submitted and invited, in two subject areas: I) the application of **biochemistry** to problems relating to **systematic biology** of organisms (**biochemical systematics**); II) the role of biochemistry in interactions between organisms or between an organism and its environment (**biochemical ecology**).

In the Biochemical Systematics subject area, comparative studies of the distribution of (secondary) metabolites within a wider taxon (e.g. genus or family) are welcome. Comparative studies, encompassing multiple accessions of each of the taxa within their distribution are particularly encouraged. Welcome are also studies combining classical chemosystematic studies (such as comparative HPLC-MS or GC-MS investigations) with (macro-) molecular phylogenetic studies. Studies that involve the comparative use of compounds to help differentiate among species such as adulterants or substitutes that illustrate the applied use of chemosystematics are welcome. In contrast, studies solely employing macromolecular phylogenetic techniques (gene sequences, RAPD studies etc.) will be considered out of scope. Discouraged are manuscripts that report known or new compounds from a single source taxon without addressing a systematic hypothesis. Also considered out of scope are studies using outdated and hard to reproduce macromolecular techniques such as RAPDs in combination with standard chemosystematic techniques such as GC-FID and GC-MS.

In the Biochemical Ecology subject area, studies addressing the role compounds play in the ecology of the organisms producing them are invited. Moreover, manuscripts that address hypothesis associated with the influence of factors such as altitude, geography, and seasonal variation on the expression of primary and secondary metabolites are encouraged. Research papers should generally represent a complete investigation and not preliminary data. Preliminary reports will only be considered where findings are of sufficient interest to justify rapid publication. New Source Reports will only be considered in cases where a significant chemosystematic or ecological finding is reported. New Source Reports have to be written in a standard format ([Example](#)).

IMPACT FACTOR

2017: 0.847 © Clarivate Analytics Journal Citation Reports 2018

ABSTRACTING AND INDEXING

Current Contents/Science Citation Index

EMBiology

Current Contents/BIOMED Database

Elsevier BIOBASE

Research Alert

Chemical Abstracts

Current Contents/Agriculture, Biology & Environmental Sciences

PASCAL/CNRS

Current Contents/SciSearch Database

BIOSIS

Scopus

EDITORIAL BOARD

Editor-in-Chief

Monique Simmonds, Royal Botanic Gardens, Kew, TW9 3AB, Richmond, England, UK

Editor for Europe & America

Christian Zidorn, Kiel, Germany

Editorial Board

Sevan Ağdamar, Istanbul, Turkey

Marco Casu, Sassari, Italy

Mark J. Costello, Auckland, New Zealand

Stefano Dall'Acqua, Padova, Italy

Marcial Escudero, Sevilla, Spain

Sebastian Granica, Warsaw, Poland

Renee Grayer, Richmond, England, UK

Stig Larsson, Uppsala, Sweden

Vladmir Margarido, Cascavel, Brazil

Satyajit Sarker, Liverpool, UK

Karel Smejkal, Brno, Czech Republic

Bin-Gui Wang, Qingdao, China

GUIDE FOR AUTHORS

Your Paper Your Way

We now differentiate between the requirements for new and revised submissions. You may choose to submit your manuscript as a single Word or PDF file to be used in the refereeing process. Only when your paper is at the revision stage, will you be requested to put your paper in to a 'correct format' for acceptance and provide the items required for the publication of your article.

To find out more, please visit the Preparation section below.

INTRODUCTION

Biochemical Systematics and Ecology is devoted to the publication of original papers and reviews, both submitted and invited, in two subject areas: (i) the application of biochemistry to problems relating to systematic biology of organisms (biochemical systematics); (ii) the role of biochemistry in interactions between organisms or between an organism and its environment (biochemical ecology).

Types of paper

Contributions will be accepted in English as Reviews, Research Papers or New Source Reports. Reviews which survey important and developing areas of biochemical systematics and ecology are encouraged but authors are advised to consult the Editor before preparing such articles. Research papers should generally be of completed investigations. Preliminary reports will be published where findings are considered to be of sufficient interest to justify rapid publication. In addition, short reports of new sources of known compounds (New Source Reports) will be accepted where they can be justified in terms of systematic or ecological significance. These reports must be written to a standard format (see below). Papers will be grouped in each issue according to subject area.

Biochemical Systematics and Ecology welcomes suitable books for review. Please send sample copies to the Editor-in-Chief.

NEW SOURCE REPORTS

New source reports are designed to allow the report of known metabolites with *bona fide* systematic or ecological interest from a new biological source. Material for this section will be refereed with the same rigour as research papers. New source reports must be written to a strict format and have a maximum size of two printed pages in the journal. The format consists of: (i) Title (max.12 words), (ii) Authors, (iii) Addresses, (iv) Keywords (max.6 words), (v) Subject and source - description of subject species and its validation, (vi) Previous work, (vii) Present study - the results to be reported, (viii) Chemotaxonomic (or Ecological) significance - justification for publication, (ix) Acknowledgements, (x) References - abbreviated forms without titles for papers and with just the first page number. Authors submitting New Source Reports are required to send all information necessary to confirm the identity of the compounds being reported. This should include copies of original spectroscopic data (e.g. UV, MS, NMR) for new and uncommon compounds.

Submission checklist

You can use this list to carry out a final check of your submission before you send it to the journal for review. Please check the relevant section in this Guide for Authors for more details.

Ensure that the following items are present:

One author has been designated as the corresponding author with contact details:

- E-mail address
- Full postal address

All necessary files have been uploaded:

Manuscript:

- Include keywords
- All figures (include relevant captions)
- All tables (including titles, description, footnotes)
- Ensure all figure and table citations in the text match the files provided
- Indicate clearly if color should be used for any figures in print *Graphical Abstracts / Highlights files* (where applicable) *Supplemental files* (where applicable)

Further considerations

- Manuscript has been 'spell checked' and 'grammar checked'
- All references mentioned in the Reference List are cited in the text, and vice versa
- Permission has been obtained for use of copyrighted material from other sources (including the Internet)

- A competing interests statement is provided, even if the authors have no competing interests to declare
- Journal policies detailed in this guide have been reviewed
- Referee suggestions and contact details provided, based on journal requirements

BEFORE YOU BEGIN

Ethics in publishing

Please see our information pages on Ethics in publishing and Ethical guidelines for journal publication.

Declaration of interest

All authors must disclose any financial and personal relationships with other people or organizations that could inappropriately influence (bias) their work. Examples of potential competing interests include employment, consultancies, stock ownership, honoraria, paid expert testimony, patent applications/registrations, and grants or other funding. Authors must disclose any interests in two places: 1. A summary declaration of interest statement in the title page file (if double-blind) or the manuscript file (if single-blind). If there are no interests to declare then please state this: 'Declarations of interest: none'. This summary statement will be ultimately published if the article is accepted.

Detailed disclosures as part of a separate Declaration of Interest form, which forms part of the journal's official records. It is important for potential interests to be declared in both places and that the information matches. More information,

Submission declaration and verification

Submission of an article implies that the work described has not been published previously (except in the form of an abstract, a published lecture or academic thesis, see 'Multiple, redundant or concurrent publication' for more information), that it is not under consideration for publication elsewhere, that its publication is approved by all authors and tacitly or explicitly by the responsible authorities where the work was carried out, and that, if accepted, it will not be published elsewhere in the same form, in English or in any other language, including electronically without the written consent of the copyright-holder. To verify originality, your article may be checked by the originality detection service Crossref Similarity Check.

Preprints

Please note that preprints can be shared anywhere at any time, in line with Elsevier's sharing policy. Sharing your preprints e.g. on a preprint server will not count

as prior publication (see 'Multiple, redundant or concurrent publication' for more information).

Use of inclusive language

Inclusive language acknowledges diversity, conveys respect to all people, is sensitive to differences, and promotes equal opportunities. Articles should make no assumptions about the beliefs or commitments of any reader, should contain nothing which might imply that one individual is superior to another on the grounds of race, sex, culture or any other characteristic, and should use inclusive language throughout. Authors should ensure that writing is free from bias, for instance by using 'he or she', 'his/her' instead of 'he' or 'his', and by making use of job titles that are free of stereotyping (e.g. 'chairperson' instead of 'chairman' and 'flight attendant' instead of 'stewardess').

Changes to authorship

Authors are expected to consider carefully the list and order of authors **before** submitting their manuscript and provide the definitive list of authors at the time of the original submission. Any addition, deletion or rearrangement of author names in the authorship list should be made only **before** the manuscript has been accepted and only if approved by the journal Editor. To request such a change, the Editor must receive the following from the **corresponding author**: (a) the reason for the change in author list and (b) written confirmation (e-mail, letter) from all authors that they agree with the addition, removal or rearrangement. In the case of addition or removal of authors, this includes confirmation from the author being added or removed. Only in exceptional circumstances will the Editor consider the addition, deletion or rearrangement of authors **after** the manuscript has been accepted. While the Editor considers the request, publication of the manuscript will be suspended. If the manuscript has already been published in an online issue, any requests approved by the Editor will result in a corrigendum.

Copyright

Upon acceptance of an article, authors will be asked to complete a 'Journal Publishing Agreement' (see more information on this). An e-mail will be sent to the corresponding author confirming receipt of the manuscript together with a 'Journal Publishing Agreement' form or a link to the online version of this agreement. Subscribers may reproduce tables of contents or prepare lists of articles including abstracts for internal circulation within their institutions. Permission of the Publisher is required for resale or distribution outside the institution and for all other derivative works, including compilations and translations. If excerpts from other copyrighted works are included, the author(s) must obtain written permission from the copyright owners and credit the source(s) in the article. Elsevier has preprinted forms for use by authors in these cases. For gold open access articles: Upon acceptance of an article, authors will be asked to complete an 'Exclusive License Agreement' (more information). Permitted third party reuse of gold open access articles is determined by the author's choice of user license.

Author rights

As an author you (or your employer or institution) have certain rights to reuse your work. More information.

Elsevier supports responsible sharing

Find out how you can share your research published in Elsevier journals.

Role of the funding source

You are requested to identify who provided financial support for the conduct of the research and/or preparation of the article and to briefly describe the role of the sponsor(s), if any, in study design; in the collection, analysis and interpretation of data; in the writing of the report; and in the decision to submit the article for publication. If the funding source(s) had no such involvement then this should be stated.

Funding body agreements and policies

Elsevier has established a number of agreements with funding bodies which allow authors to comply with their funder's open access policies. Some funding bodies will reimburse the author for the gold open access publication fee. Details of existing agreements are available online.

Open access

This journal offers authors a choice in publishing their research:

Subscription

- Articles are made available to subscribers as well as developing countries and patient groups through our universal access programs.
- No open access publication fee payable by authors.
- The Author is entitled to post the accepted manuscript in their institution's repository and make this public after an embargo period (known as green Open Access). The published journal article cannot be shared publicly, for example on ResearchGate or Academia.edu, to ensure the sustainability of peer-reviewed research in journal publications. The embargo period for this journal can be found below.

Gold open access

- Articles are freely available to both subscribers and the wider public with permitted reuse.
- A gold open access publication fee is payable by authors or on their behalf, e.g. by their research funder or institution.

Regardless of how you choose to publish your article, the journal will apply the same peer review criteria and acceptance standards. For gold open access articles, permitted third party (re)use is defined by the following Creative Commons user licenses:

Creative Commons Attribution (CC BY)

Lets others distribute and copy the article, create extracts, abstracts, and other revised versions, adaptations or derivative works of or from an article (such as a translation), include in a collective work (such as an anthology), text or data mine the article, even for commercial purposes, as long as they credit the author(s), do not represent the author as endorsing their adaptation of the article, and do not modify the article in such a way as to damage the author's honor or reputation.

Creative Commons Attribution-NonCommercial-NoDerivs (CC BY-NC-ND)

For non-commercial purposes, lets others distribute and copy the article, and to include in a collective work (such as an anthology), as long as they credit the author(s) and provided they do not alter or modify the article. The gold open access publication fee for this journal is **USD 2600**, excluding taxes. Learn more about Elsevier's pricing policy: <https://www.elsevier.com/openaccesspricing>.

Green open access

Authors can share their research in a variety of different ways and Elsevier has a number of green open access options available. We recommend authors see our green open access page for further information. Authors can also self-archive their manuscripts immediately and enable public access from their institution's repository after an embargo period. This is the version that has been accepted for publication and which typically includes author-incorporated changes suggested during submission, peer review and in editor-author communications. Embargo period: For subscription articles, an appropriate amount of time is needed for journals to deliver value to subscribing customers before an article becomes freely available to the public. This is the embargo period and it begins from the date the article is formally published online in its final and fully citable form. Find out more.

This journal has an embargo period of 24 months.

Elsevier Researcher Academy

Researcher Academy is a free e-learning platform designed to support early and mid-career researchers throughout their research journey. The "Learn" environment at Researcher Academy offers several interactive modules, webinars, downloadable guides and resources to guide you through the process of writing for research and going through peer review. Feel free to use these free resources to improve your submission and navigate the publication process with ease.

Language (usage and editing services)

Please write your text in good English (American or British usage is accepted, but not a mixture of these). Authors who feel their English language manuscript may require editing to eliminate possible grammatical or spelling errors and to conform to correct scientific English may wish to use the English Language Editing service available from Elsevier's WebShop.

Submission

Our online submission system guides you stepwise through the process of entering your article details and uploading your files. The system converts your article files to a single PDF file used in the peer-review process. Editable files (e.g., Word, LaTeX) are required to typeset your article for final publication. All correspondence, including notification of the Editor's decision and requests for revision, is sent by e-mail.

Submit your article

Please submit your article via <http://ees.elsevier.com/bse/>

Referees

Please submit the names and institutional e-mail addresses of several potential referees. For more details, visit our Support site. Note that the editor retains the sole right to decide whether or not the suggested reviewers are used.

PREPARATION

NEW SUBMISSIONS

Submission to this journal proceeds totally online and you will be guided stepwise through the creation and uploading of your files. The system automatically converts your files to a single PDF file, which is used in the peer-review process.

As part of the Your Paper Your Way service, you may choose to submit your manuscript as a single file to be used in the refereeing process. This can be a PDF file or a Word document, in any format or lay-out that can be used by referees to evaluate your manuscript. It should contain high enough quality figures for refereeing. If you prefer to do so, you may still provide all or some of the source files at the initial submission. Please note that individual figure files larger than 10 MB must be uploaded separately.

References

There are no strict requirements on reference formatting at submission. References can be in any style or format as long as the style is consistent. Where applicable, author(s) name(s), journal title/ book title, chapter title/article title, year of publication, volume number/book chapter and the article number or pagination must be present. Use of DOI is highly encouraged. The reference style used by the journal will be applied to the accepted article by Elsevier at the proof stage. Note that missing data will be highlighted at proof stage for the author to correct.

Formatting requirements

There are no strict formatting requirements but all manuscripts must contain the essential elements needed to convey your manuscript, for example Abstract, Keywords, Introduction, Materials and Methods, Results, Conclusions, Artwork and Tables with Captions.

If your article includes any Videos and/or other Supplementary material, this should be included in your initial submission for peer review purposes. Divide the article into clearly defined sections.

Figures and tables embedded in text

Please ensure the figures and the tables included in the single file are placed next to the relevant text in the manuscript, rather than at the bottom or the top of the file. The corresponding caption should be placed directly below the figure or table.

Peer review

This journal operates a single blind review process. All contributions will be initially assessed by the editor for suitability for the journal. Papers deemed suitable are then typically sent to a minimum of two independent expert reviewers to assess the scientific quality of the paper.

The Editor is responsible for the final decision regarding acceptance or rejection of articles. The Editor's decision is final. More information on types of peer review.

REVISED SUBMISSIONS

Use of word processing software

Regardless of the file format of the original submission, at revision you must provide us with an editable file of the entire article. Keep the layout of the text as simple as possible. Most formatting codes will be removed and replaced on processing the article. The electronic text should be prepared in a way very similar to that of conventional manuscripts (see also the Guide to Publishing with Elsevier). See also the section on Electronic artwork.

To avoid unnecessary errors you are strongly advised to use the 'spell-check' and 'grammar-check' functions of your word processor.

Article structure

Subdivision - numbered sections

Divide your article into clearly defined and numbered sections. Subsections should be numbered 1.1 (then 1.1.1, 1.1.2, ...), 1.2, etc. (the abstract is not included in section numbering). Use this numbering also for internal cross-referencing: do not just refer to 'the text'. Any subsection may be given a brief heading. Each heading should appear on its own separate line.

Introduction

State the objectives of the work and provide an adequate background, avoiding a detailed literature survey or a summary of the results.

Material and methods

Provide sufficient details to allow the work to be reproduced by an independent researcher. Methods that are already published should be summarized, and indicated by a reference. If quoting directly from a previously published method, use quotation marks and also cite the source. Any modifications to existing methods should also be described.

Results

Results should be clear and concise.

Discussion

This should explore the significance of the results of the work, not repeat them. A combined Results and Discussion section is often appropriate. Avoid extensive citations and discussion of published literature.

Conclusions

The main conclusions of the study may be presented in a short Conclusions section, which may stand alone or form a subsection of a Discussion or Results and Discussion section.

Appendices

If there is more than one appendix, they should be identified as A, B, etc. Formulae and equations in appendices should be given separate numbering: Eq. (A.1), Eq. (A.2), etc.; in a subsequent appendix, Eq. (B.1) and so on. Similarly for tables and figures: Table A.1; Fig. A.1, etc.

Essential title page information

- ***Title.*** Concise and informative. Titles are often used in information-retrieval systems. Avoid abbreviations and formulae where possible.
- ***Author names and affiliations.*** Please clearly indicate the given name(s) and family name(s) of each author and check that all names are accurately spelled. You can add your name between parentheses in your own script behind the English transliteration. Present the authors' affiliation addresses (where the actual work was done) below the names. Indicate all affiliations with a lower-case superscript letter immediately after the author's name and in front of the appropriate address. Provide the full postal address of each affiliation, including the country name and, if available, the e-mail address of each author.

- ***Corresponding author.*** Clearly indicate who will handle correspondence at all stages of refereeing and publication, also post-publication. This responsibility includes answering any future queries about Methodology and Materials. **Ensure that the e-mail address is given and that contact details are kept up to date by the corresponding author.**
- ***Present/permanent address.*** If an author has moved since the work described in the article was done, or was visiting at the time, a 'Present address' (or 'Permanent address') may be indicated as a footnote to that author's name. The address at which the author actually did the work must be retained as the main, affiliation address. Superscript Arabic numerals are used for such footnotes.

Abstract

A concise and factual abstract is required. The abstract should state briefly the purpose of the research, the principal results and major conclusions. An abstract is often presented separately from the article, so it must be able to stand alone. For this reason, References should be avoided, but if essential, then cite the author(s) and year(s). Also, non-standard or uncommon abbreviations should be avoided, but if essential they must be defined at their first mention in the abstract itself.

Graphical abstract

Although a graphical abstract is optional, its use is encouraged as it draws more attention to the online article. The graphical abstract should summarize the contents of the article in a concise, pictorial form designed to capture the attention of a wide readership. Graphical abstracts should be submitted as a separate file in the online submission system. Image size: Please provide an image with a minimum of 531×1328 pixels (h \times w) or proportionally more. The image should be readable at a size of 5×13 cm using a regular screen resolution of 96 dpi. Preferred file types: TIFF, EPS, PDF or MS Office files. You can view Example Graphical Abstracts on our information site.

Authors can make use of Elsevier's Illustration Services to ensure the best presentation of their images and in accordance with all technical requirements.

Highlights

Highlights are mandatory for this journal. They consist of a short collection of bullet points that convey the core findings of the article and should be submitted in a separate editable file in the online submission system. Please use 'Highlights' in the file name and include 3 to 5 bullet points (maximum 85 characters, including spaces, per bullet point). You can view example Highlights on our information site.

Keywords

Immediately after the abstract, provide a maximum of 6 keywords, using American spelling and avoiding general and plural terms and multiple concepts (avoid, for example, 'and', 'of'). Be sparing with abbreviations: only abbreviations firmly established in the field may be eligible. These keywords will be used for indexing purposes.

Abbreviations

Define abbreviations that are not standard in this field in a footnote to be placed on the first page of the article. Such abbreviations that are unavoidable in the abstract must be defined at their first mention there, as well as in the footnote. Ensure consistency of abbreviations throughout the article.

Acknowledgements

Collate acknowledgements in a separate section at the end of the article before the references and do not, therefore, include them on the title page, as a footnote to the title or otherwise. List here those individuals who provided help during the research (e.g., providing language help, writing assistance or proof reading the article, etc.).

Formatting of funding sources

List funding sources in this standard way to facilitate compliance to funder's requirements: Funding: This work was supported by the National Institutes of Health [grant numbers xxxx, yyyy]; the Bill & Melinda Gates Foundation, Seattle, WA [grant number zzzz]; and the United States Institutes of Peace [grant number aaaa]. It is not necessary to include detailed descriptions on the program or type of grants and awards. When funding is from a block grant or other resources available to a university, college, or other research institution, submit the name of the institute or organization that provided the funding. If no funding has been provided for the research, please include the following sentence: This research did not receive any specific grant from funding agencies in the public, commercial, or not-for-profit sectors.

Nomenclature and Units

Follow internationally accepted rules and conventions: use the international system of units (SI). If other quantities are mentioned, give their equivalent in SI. You are urged to consult IUPAC: Nomenclature of Organic Chemistry: <http://www.iupac.org/> for further information. See http://www.elsevier.com/__data/promis_misc/nomenclature.pdf *Math formulae*. Please submit math equations as editable text and not as images. Present simple formulae in line with normal text where possible and use the solidus (/) instead of a horizontal line for small fractional terms, e.g., X/Y. In principle, variables are to be presented in italics. Powers of e are often more conveniently denoted by exp. Number consecutively any equations that have to be displayed separately from the text (if referred to explicitly in the text).

Footnotes

Footnotes should be used sparingly. Number them consecutively throughout the article. Many word processors build footnotes into the text, and this feature may be used. Should this not be the case, indicate the position of footnotes in the text and present the footnotes themselves separately at the end of the article.

Electronic artwork

General points

- Make sure you use uniform lettering and sizing of your original artwork.
 - Preferred fonts: Arial (or Helvetica), Times New Roman (or Times), Symbol, Courier.
 - Number the illustrations according to their sequence in the text.
 - Use a logical naming convention for your artwork files.
 - Indicate per figure if it is a single, 1.5 or 2-column fitting image.
 - For Word submissions only, you may still provide figures and their captions, and tables within a single file at the revision stage.
-
- Please note that individual figure files larger than 10 MB must be provided in separate source files. A detailed guide on electronic artwork is available.

You are urged to visit this site; some excerpts from the detailed information are given here.

Formats

Regardless of the application used, when your electronic artwork is finalized, please 'save as' or convert the images to one of the following formats (note the resolution requirements for line drawings, halftones, and line/halftone combinations given below):

EPS (or PDF): Vector drawings. Embed the font or save the text as 'graphics'.

TIFF (or JPG): Color or grayscale photographs (halftones): always use a minimum of 300 dpi.

TIFF (or JPG): Bitmapped line drawings: use a minimum of 1000 dpi.

TIFF (or JPG): Combinations bitmapped line/half-tone (color or grayscale): a minimum of 500 dpi is required.

Please do not:

- Supply files that are optimized for screen use (e.g., GIF, BMP, PICT, WPG); the resolution is too low.

- Supply files that are too low in resolution.
- Submit graphics that are disproportionately large for the content.

Color artwork

Please make sure that artwork files are in an acceptable format (TIFF (or JPEG), EPS (or PDF), or MS Office files) and with the correct resolution. If, together with your accepted article, you submit usable color figures then Elsevier will ensure, at no additional charge, that these figures will appear in color online (e.g., ScienceDirect and other sites) regardless of whether or not these illustrations are reproduced in color in the printed version. **For color reproduction in print, you will receive information regarding the costs from Elsevier after receipt of your accepted article.** Please indicate your preference for color: in print or online only. Further information on the preparation of electronic artwork.

Figure captions

Ensure that each illustration has a caption. A caption should comprise a brief title (**not** on the figure itself) and a description of the illustration. Keep text in the illustrations themselves to a minimum but explain all symbols and abbreviations used.

Tables

Please submit tables as editable text and not as images. Tables can be placed either next to the relevant text in the article, or on separate page(s) at the end. Number tables consecutively in accordance with their appearance in the text and place any table notes below the table body.

Be sparing in the use of tables and ensure that the data presented in them do not duplicate results described elsewhere in the article. Please avoid using vertical rules and shading in table cells.

References

Citation in text

Please ensure that every reference cited in the text is also present in the reference list (and vice versa). Any references cited in the abstract must be given in full. Unpublished results and personal communications are not recommended in the reference list, but may be mentioned in the text. If these references are included in the reference list they should follow the standard reference style of the journal and should include a substitution of the publication date with either 'Unpublished results' or 'Personal communication'. Citation of a reference as 'in press' implies that the item has been accepted for publication creation. When copying references, please be careful as they may already contain errors. Use of the DOI is highly encouraged.

Reference links

A DOI is guaranteed never to change, so you can use it as a permanent link to any electronic article. An example of a citation using DOI for an article not yet in an issue is: VanDecar J.C., Russo R.M., Increased discoverability of research and high quality peer review are ensured by online links to the sources cited. In order to allow us to create links to abstracting and indexing services, such as Scopus, CrossRef and PubMed, please ensure that data provided in the references are correct. Please note that incorrect surnames, journal/book titles, publication year and pagination may prevent link James D.E., Ambeh W.B., Franke M. (2003). Aseismic continuation of the Lesser Antilles slab beneath northeastern Venezuela. *Journal of Geophysical Research*, <https://doi.org/10.1029/2001JB000884>. Please note the format of such citations should be in the same style as all other references in the paper.

Web references

As a minimum, the full URL should be given and the date when the reference was last accessed. Any further information, if known (DOI, author names, dates, reference to a source publication, etc.), should also be given. Web references can be listed separately (e.g., after the reference list) under a different heading if desired, or can be included in the reference list.

Data references

This journal encourages you to cite underlying or relevant datasets in your manuscript by citing them in your text and including a data reference in your Reference List. Data references should include the following elements: author name(s), dataset title, data repository, version (where available), year, and global persistent identifier. Add [dataset] immediately before the reference so we can properly identify it as a data reference. The [dataset] identifier will not appear in your published article.

References in a special issue

Please ensure that the words 'this issue' are added to any references in the list (and any citations in the text) to other articles in the same Special Issue.

Reference management software

Most Elsevier journals have their reference template available in many of the most popular reference management software products. These include all products that support Citation Style Language styles, such as Mendeley and Zotero, as well as EndNote. Using the word processor plug-ins from these products, authors only need to select the appropriate journal template when preparing their article, after which citations and bibliographies will be automatically formatted in the journal's style.

If no template is yet available for this journal, please follow the format of the sample references and citations as shown in this Guide. If you use reference management software, please ensure that you remove all field codes before submitting the electronic manuscript. More information on how to remove field codes. Users of Mendeley Desktop can easily install the reference style for this journal by clicking the following link:<http://open.mendeley.com/use-citation-style/biochemical-systematics-and-ecology>

When preparing your manuscript, you will then be able to select this style using the Mendeley plug-ins for Microsoft Word or LibreOffice.

Reference formatting

There are no strict requirements on reference formatting at submission. References can be in any style or format as long as the style is consistent. Where applicable, author(s) name(s), journal title/ book title, chapter title/article title, year of publication, volume number/book chapter and the article number or pagination must be present. Use of DOI is highly encouraged. The reference style used by the journal will be applied to the accepted article by Elsevier at the proof stage. Note that missing data will be highlighted at proof stage for the author to correct. If you do wish to format the references yourself they should be arranged according to the following examples:

Reference style

Text: All citations in the text should refer to:

1. *Single author:* the author's name (without initials, unless there is ambiguity) and the year of publication;
2. *Two authors:* both authors' names and the year of publication;
3. *Three or more authors:* first author's name followed by 'et al.' and the year of publication. Citations may be made directly (or parenthetically). Groups of references can be listed either first alphabetically, then chronologically, or vice versa.

Examples: 'as demonstrated (Allan, 2000a, 2000b, 1999; Allan and Jones, 1999)... Or, as demonstrated (Jones, 1999; Allan, 2000)... Kramer et al. (2010) have recently shown ...'

List: References should be arranged first alphabetically and then further sorted chronologically if necessary. More than one reference from the same author(s) in the same year must be identified by the letters 'a', 'b', 'c', etc., placed after the year of publication.

Examples:

Reference to a journal publication:

Van der Geer, J., Hanraads, J.A.J., Lupton, R.A., 2010. The art of writing a scientific article. *J. Sci. Commun.* 163, 51–59. <https://doi.org/10.1016/j.Sc.2010.00372>.

Reference to a journal publication with an article number:

Van der Geer, J., Hanraads, J.A.J., Lupton, R.A., 2018. The art of writing a scientific article. *Heliyon.* 19, e00205. <https://doi.org/10.1016/j.heliyon.2018.e00205>.

Reference to a book:

Strunk Jr., W., White, E.B., 2000. *The Elements of Style*, fourth ed. Longman, New York. Reference to a chapter in an edited book:

Mettam, G.R., Adams, L.B., 2009. How to prepare an electronic version of your article, in: Jones, B.S., Smith, R.Z. (Eds.), *Introduction to the Electronic Age*. E-Publishing Inc., New York, pp. 281–304. Reference to a website:

Cancer Research UK, 1975. *Cancer statistics reports for the UK*. <http://www.cancerresearchuk.org/aboutcancer/statistics/cancerstatsreport/> (accessed 13 March 2003). Reference to a dataset: [dataset] Oguro, M., Imahiro, S., Saito, S., Nakashizuka, T., 2015. Mortality data for Japanese oak wilt disease and surrounding forest compositions. *Mendeley Data*, v1. <https://doi.org/10.17632/xwj98nb39r.1>.

Journal abbreviations source

Journal names should be abbreviated according to the List of Title Word Abbreviations.

Video

Elsevier accepts video material and animation sequences to support and enhance your scientific research. Authors who have video or animation files that they wish to submit with their article are strongly encouraged to include links to these within the body of the article. This can be done in the same way as a figure or table by referring to the video or animation content and noting in the body text where it should be placed. All submitted files should be properly labeled so that they directly relate to the video file's content. In order to ensure that your video or animation material is directly usable, please provide the file in one of our recommended file formats with a preferred maximum size of 150 MB per file, 1 GB in total. Video and animation files supplied will be published online in the electronic version of your article in Elsevier Web products, including ScienceDirect. Please supply 'stills' with your files: you can choose any frame from the video or animation or make a separate image. These will be used instead of standard icons and will personalize the link to your video data. For more detailed instructions please visit our video instruction pages. Note: since video and animation cannot be embedded in the print version of the journal, please provide text for both the electronic and the print version for the portions of the article that refer to this content.

Data visualization

Include interactive data visualizations in your publication and let your readers interact and engage more closely with your research. Follow the instructions here to find out about available data visualization options and how to include them with your article.

Research data

This journal encourages and enables you to share data that supports your research publication where appropriate, and enables you to interlink the data with your published articles. Research data refers to the results of observations or experimentation that validate research findings. To facilitate reproducibility and data reuse, this journal also encourages you to share your software, code, models, algorithms, protocols, methods and other useful materials related to the project.

Supplementary material

Supplementary material such as applications, images and sound clips, can be published with your article to enhance it. Submitted supplementary items are published exactly as they are received (Excel or PowerPoint files will appear as such online). Please submit your material together with the article and supply a concise, descriptive caption for each supplementary file. If you wish to make changes to supplementary material during any stage of the process, please make sure to provide an updated file. Do not annotate any corrections on a previous version. Please switch off the 'Track Changes' option in Microsoft Office files as these will appear in the published version. Below are a number of ways in which you can associate data with your article or make a statement about the availability of your data when submitting your manuscript. If you are sharing data in one of these ways, you are encouraged to cite the data in your manuscript and reference list. Please refer to the "References" section for more information about data citation. For more information on depositing, sharing and using research data and other relevant research materials, visit the research data page.

Data linking

If you have made your research data available in a data repository, you can link your article directly to the dataset. Elsevier collaborates with a number of repositories to link articles on ScienceDirect with relevant repositories, giving readers access to underlying data that gives them a better understanding of the research described. There are different ways to link your datasets to your article. When available, you can directly link your dataset to your article by providing the relevant information in the submission system. For more information, visit the database linking page. For supported data repositories a repository banner will automatically appear next to your published article on ScienceDirect. In addition, you can link to relevant data or entities through identifiers within the text of your manuscript, using the following format: Database: xxxx (e.g., TAIR: AT1G01020; CCDC: 734053; PDB: 1XFN).

Mendeley Data

This journal supports Mendeley Data, enabling you to deposit any research data (including raw and processed data, video, code, software, algorithms, protocols, and methods) associated with your manuscript in a free-to-use, open access repository. During the submission process, after uploading your manuscript, you will have the opportunity to upload your relevant datasets directly to *Mendeley Data*. The datasets will be listed and directly accessible to readers next to your published article online. For more information, visit the Mendeley Data for journals page.

Data in Brief

You have the option of converting any or all parts of your supplementary or additional raw data into one or multiple data articles, a new kind of article that houses and describes your data. Data articles ensure that your data is actively reviewed, curated, formatted, indexed, given a DOI and publicly available to all upon publication. You are encouraged to submit your article for *Data in Brief* as an additional item directly alongside the revised version of your manuscript. If your research article is accepted, your data article will automatically be transferred over to *Data in Brief* where it will be editorially reviewed and published in the open access data journal, *Data in Brief*. Please note an open access fee of 500 USD is payable for publication in *Data in Brief*. Full details can be found on the Data in Brief website. Please use this template to write your Data in Brief reproducible. Authors are encouraged to submit their MethodsX article as an additional item directly alongside the revised version of their manuscript. If your research article is accepted, your methods article will automatically be transferred over to MethodsX where it will be editorially reviewed. Please note an open access fee is payable for publication in MethodsX. Full details can be found on the MethodsX website. Please use this template to prepare your MethodsX article.

MethodsX

You have the option of converting relevant protocols and methods into one or multiple MethodsX articles, a new kind of article that describes the details of customized research methods. Many researchers spend a significant amount of time on developing methods to fit their specific needs or setting, but often without getting credit for this part of their work. MethodsX, an open access journal, now publishes this information in order to make it searchable, peer reviewed, citable and

Data statement

To foster transparency, we encourage you to state the availability of your data in your submission. This may be a requirement of your funding body or institution. If your data is unavailable to access or unsuitable to post, you will have the opportunity to indicate why during the submission process, for example by stating that the research data is confidential. The statement will appear with your published article on ScienceDirect. For more information, visit the Data Statement page.

AFTER ACCEPTANCE

Online proof correction

Corresponding authors will receive an e-mail with a link to our online proofing system, allowing annotation and correction of proofs online. The environment is similar to MS Word: in addition to editing text, you can also comment on figures/tables and answer questions from the Copy Editor. Web-based proofing provides a faster and less error-prone process by allowing you to directly type your corrections, eliminating the potential introduction of errors. If preferred, you can still choose to annotate and upload your edits on the PDF version. All instructions for proofing will be given in the e-mail we send to authors, including alternative methods to the online version and PDF. We will do everything possible to get your article published quickly and accurately. Please use this proof only for checking the typesetting, editing, completeness and correctness of the text, tables and figures. Significant changes to the article as accepted for

publication will only be considered at this stage with permission from the Editor. It is important to ensure that all corrections are sent back to us in one communication. Please check carefully before replying, as inclusion of any subsequent corrections cannot be guaranteed. Proofreading is solely your responsibility.

Offprints

The corresponding author will, at no cost, receive a customized Share Link providing 50 days free access to the final published version of the article on ScienceDirect. The Share Link can be used for sharing the article via any communication channel, including email and social media. For an extra charge, paper offprints can be ordered via the offprint order form which is sent once the article is accepted for publication. Both corresponding and co-authors may order offprints at any time via Elsevier's Webshop. Corresponding authors who have published their article gold open access do not receive a Share Link as their final published version of the article is available open access on ScienceDirect and can be shared through the article DOI link.

AUTHOR INQUIRIES

Visit the Elsevier Support Center to find the answers you need. Here you will find everything from Frequently Asked Questions to ways to get in touch. You can also check the status of your submitted article or find out when your accepted article will be published.