



**UNIVERSIDADE FEDERAL DO OESTE DO PARÁ  
INSTITUTO DE CIÊNCIAS E TECNOLOGIA DAS ÁGUAS  
CURSO DE BACHARELADO EM CIÊNCIAS BIOLÓGICAS**

**THAILA LUENE DOS SANTOS VIEIRA**

**COMUNIDADE ICTIOPLANCTÔNICA EM LAGOAS DOS RIOS TAPAJÓS E  
TROMBETAS, AMAZÔNIA ORIENTAL**

**SANTARÉM – PA  
2023**

**Dados Internacionais de Catalogação-na-Publicação (CIP) Sistema  
Integrado de Bibliotecas – SIBI/UFOPA**

---

V658c Vieira, Thaila Luene dos Santos

Comunidade ictioplanctônica em lagoas dos Rios Tapajós e Trombetas,  
Amazônia Oriental./Thaila Luene dos Santos Vieira. – Santarém, 2023.  
28 p. : il.  
Inclui bibliografias.

Orientador: Diego Maia Zacardi.

Trabalho de Conclusão de Curso (Graduação) – Universidade Federal do Oeste  
do Pará, Instituto de Tecnologia e Ciências das Águas, Bacharelado em Ciências  
Biológicas.

1. Larvas de peixes. 2. Composição. 3. Abundância. I. Zacardi, Diego Maia, *orient.*  
II. Título.

CDD: 23 ed. 597.098115

**THAILA LUENE DOS SANTOS VIEIRA**

**COMUNIDADE ICTIOPLANCTÔNICA EM LAGOAS DOS RIOS TAPAJÓS E  
TROMBETAS, AMAZÔNIA ORIENTAL**

Trabalho de Conclusão de Curso apresentado ao Bacharelado em Ciências Biológicas, do Instituto de Ciências e Tecnologia das Águas, da Universidade Federal do Oeste do Pará, para obtenção do grau de Bacharel em Ciências Biológicas.  
Orientador Prof. Dr. Diego Maia Zacardi

**SANTARÉM – PA  
2023**



**UNIVERSIDADE FEDERAL DO OESTE DO PARÁ  
INSTITUTO DE CIÊNCIAS E TECNOLOGIA DAS ÁGUAS  
CURSO DE BACHARELADO EM CIÊNCIAS BIOLÓGICAS**

**ATA DE DEFESA DO TRABALHO DE CONCLUSÃO DE CURSO**

Aos dezenove (19) dias do mês de janeiro do ano de dois mil e vinte e três, às 17 h, realizou-se na sala 105 C no núcleo de salas de aula (NSA) a sessão pública de defesa do Trabalho de Conclusão de Curso da discente Thaila Luene dos Santos Vieira, intitulado *Ichthyoplankton community in lagoons of the tapajós and trombetas rivers, eastern amazon (Comunidade ictioplancctônica em lagoas dos rios Tapajós e Trombetas, Amazônia Oriental)*, como requisito parcial para obtenção do título de Bacharel em Ciências Biológicas. Os trabalhos foram conduzidos pelo professor Dr. Diego Maia Zacardi, orientador da discente e presidente da Banca Examinadora. A discente foi dispensada de banca avaliadora, uma vez que apresentou um artigo científico, sob o mesmo título, publicado na revista Acta Fish, volume 10(2), páginas 113 a 132, ano de 2022. Após apresentação pública do Trabalho de Conclusão e Curso, o presidente da banca encerrou as atividades dando o parecer final, considerando-a APROVADA. Proclamados os resultados pelo presidente da Banca, foram encerrados os trabalhos e, para constar, eu Diego Maia Zacardi, na qualidade de professor orientador do Trabalho de Conclusão de Curso avaliado, lavrei a presente ata que assino juntamente com os demais membros da Banca Examinadora.

Santarém/PA, 19 de janeiro de 2023.

Presidente/orientador: \_\_\_\_\_

Aos meus pais e irmãs, (Martins,  
Regina, Karen e Domingas), por todo  
amor, carinho, orações e incentivo.

## **AGRADECIMENTOS**

Agradeço à Universidade Federal do Oeste do Pará e ao curso Bacharelado em Ciências Biológicas pela oportunidade de realizar a graduação, por todo apoio financeiro por meio de bolsas permanências, auxílios às aulas de campos, infraestrutura e corpo docente qualificado.

Ao Conselho Nacional de Desenvolvimento Científico e Tecnológico (CNPq) pelas bolsas de iniciação científica a mim concedidas durante o período de graduação.

Aos docentes do curso Bacharelado em Ciências Biológicas (BCB) do Instituto de Ciências e Tecnologia das Águas (ICTA) que foram grandes mestres ao repassarem seus conhecimentos; aos demais professores do ICTA que gentilmente colaboraram ministrando disciplinas à turma BCB2016 e àqueles que eu tive o privilégio de cursar disciplinas eletivas.

Ao meu orientador Professor Diego Maia Zacardi. Um ser humano de coração enorme, acolhedor, paciente e bondoso. Agradeço por todo apoio e oportunidade que me deste. Meu respeito, carinho, gratidão e admiração pelo senhor serão eternos!

Agradeço a minha família, pai Martins e mãe Regina principalmente. Obrigada por serem esse alicerce que me mantém de pé, pelas orações, por todo amor, cuidado e zelo que sempre tiveram comigo. Sempre amarei vocês!

A minha turma BCB2016: Greicy, Douglas, Deivid, Lucas, Manoel, Elton, Raquel e aos demais colegas de classe por tornar esses anos mais fáceis.

Agradeço ao meu companheiro, amigo e confidente Jerry Max por todo amor e todo apoio nessa reta final, agradeço a minha filha Elisa que é meu porto seguro, meu lar, minha razão de viver e de lutar pra ser e dar o melhor de mim.

Por fim e mais importante, agradeço a Deus: pelo dom da vida, pela saúde e por sempre me ouvir quando eu mais precisava. Sem Ele, eu nada poderia fazer e não teria chegado até aqui!

## RESUMO

Avaliou-se a estrutura da assembleia ictioplanctônica (composição taxonômica, abundância, estágios de desenvolvimento e relação com variáveis ambientais locais) em lagoas marginais localizadas nos rios de águas claras Tapajós e Trombetas, Bacia Amazônica, Brasil durante os períodos de águas altas (enchente e cheia). As amostras foram coletadas por meios de arrastos horizontais na subsuperfície da água com rede de plâncton (malha 300  $\mu\text{m}$ ). A triagem, contagem, identificação do material biológico e a classificação dos estágios embrionário e larval foi realizado sob microscópio estereoscópico. Foram capturados 122 ovos e 2.813 larvas de peixes, distribuídas em 9 ordens, 18 famílias, 20 gêneros e 26 espécies. Destas, mais de 75% são consideradas como sedentárias ou migradoras de curta distância e mais de 50% são de interesse comercial. Os resultados revelaram padrões flutuantes de abundância e composição de espécies entre as lagoas dos dois rios. A comunidade ictioplanctônica nas lagoas consistiu principalmente de larvas de peixes pelágicos nativos pertencentes à família Engraulidae e larvas de peixes bentônicos como Eleotridae, perfazendo mais de 85% dos indivíduos capturados na área de estudo. Além desses dois grupos, algumas larvas de espécies de piranhas (*Pygocentrus nattereri*) se destacaram pelas elevadas densidades nas lagoas do rio Tapajós e larvas de pescadas (*Plagioscion* spp.) nas lagoas do rio Trombetas. As maiores densidades de larvas foram registradas durante o período noturno com variações significativas registrada na composição de espécies. A presença de todos os estágios de desenvolvimento larval indica que estes biótopos possibilitam o crescimento e são essenciais para o recrutamento biológico das espécies de peixes da região. O ictioplâncton apresentou baixa correlação com as variáveis limnológicas, no entanto, os padrões de abundância e composição das assembleias de larvas de peixes nas lagoas dos rios Tapajós e Trombetas foram elucidados preliminarmente, embora sejam necessários trabalhos adicionais, para avaliar os efeitos sobre a sobrevivência e recrutamento.

**Palavras-chave:** Larvas de peixes. Composição. Abundância. Águas claras. Berçário.

## ABSTRACT

We evaluated the structure of the ichthyoplanktonic assemblage (taxonomic composition, abundance, developmental stages, and relationship with local environmental variables) in marginal lagoons located in the clearwater Tapajós and Trombetas rivers, Amazon Basin, Brazil during periods of high water (rising waters and flooding). Samples were collected by means of horizontal drags in the subsurface of the water with a plankton net (300  $\mu$  m mesh). Sorting, counting, identification of biological material, and classification of embryonic and larval stages were performed under a stereoscopic microscope. A total of 122 eggs and 2,813 fish larvae were captured and distributed in nine orders, 18 families, 20 genera, and 26 species. Of these, more than 75% are considered sedentary or short-distance migrants and more than 50% are of commercial interest. The results revealed fluctuating patterns of abundance and species composition between the lagoons of the two rivers. The ichthyoplankton community in the lagoons consisted mainly of larvae of native pelagic fish belonging to the Engraulidae family and larvae of benthic fish such as Eleotridae, making up more than 85% of the individuals captured in the study area. In addition to these two groups, some larvae of piranha species (*Pygocentrus nattereri*) stood out due to their high densities in the Tapajós river lagoons and croaker larvae (*Plagioscion* spp.) in the Trombetas river lagoons. The highest larval densities were recorded during the night with significant variations recorded in species composition. The presence of all stages of larval development indicates that these biotopes enable growth and are essential for the biological recruitment of fish species in the region. The ichthyoplankton showed a low correlation with the limnological variables, however, the patterns of abundance and composition of fish larval assemblages in the lagoons of the Tapajós and Trombetas rivers were preliminarily elucidated, although additional work is needed to assess the effects on survival and recruitment.

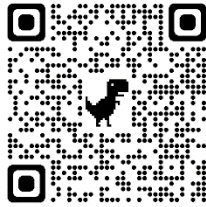
**Keywords:** Larval fish. Composition. Abundance. Clear water. Nursery.



*“Espere no senhor. Seja forte!  
Coragem! Espere no senhor!”*  
(Salmos 27:14)

## SUMÁRIO

<b>1 INTRODUÇÃO .....</b>	<b>114</b>
<b>2 MATERIAL E MÉTODOS.....</b>	<b>115</b>
2.1 Área de estudo.....	115
2.2 Coleta do material biológico .....	116
2.3 Procedimentos em laboratório.....	117
2.4 Análises de dados .....	118
<b>3 RESULTADOS.....</b>	<b>119</b>
<b>4 DISCUSSÃO .....</b>	<b>126</b>
<b>5 REFERÊNCIAS .....</b>	<b>127</b>
<b>6 ANEXO I.....</b>	<b>.....</b>



Open Access

Submetido 21 dez 2022

Aceito 26 dez 2022

Publicado 31 dez 2022

Autor Correspondente

D. M. Zacardi

dmzacardi@hotmail.com

ISSN

2357-8068

URL

[www.actapescanews.com](http://www.actapescanews.com)

DOI

10.46732/actafish

Indexadores/Diretórios

Sumários

[www.sumarios.org](http://www.sumarios.org)

Diadorim

[Diadorim.ibict.br](http://Diadorim.ibict.br)








Latindex

[www.latindex.org](http://www.latindex.org)

OPEN ACCESS

# ICHTHYOPLANKTON COMMUNITY IN LAGOONS OF THE TAPAJÓS AND TROMBETAS RIVERS, EASTERN AMAZON

## Comunidade ictioplanctônica em lagoas dos rios Tapajós e Trombetas, Amazônia Oriental

Thaila Luene dos Santos Vieira<sup>1</sup> , Fabíola Katrine de Souza Silva<sup>1</sup> , Zaqueu dos Santos<sup>1</sup> , Lucas Silva de Oliveira<sup>1,2</sup> , Ruineris Almada Cajado<sup>1,3</sup> , Elzamara de Castro Oliveira<sup>1,4</sup>  & Diego Maia Zacardi<sup>\*1,4</sup> 

<sup>1</sup>Laboratório de Ecologia do Ictioplâncton e Pesca em Águas Interiores, Universidade Federal do Oeste do Pará - UFOPA

<sup>2</sup>Programa de Pós-graduação em Ecologia, Universidade Federal do Pará - UFPA

<sup>3</sup>Programa de Pós-graduação em Ecologia Aquática e Pesca, Universidade Federal do Pará - UFPA

<sup>4</sup>Programa de Pós-graduação em Biodiversidade e Conservação, Universidade Federal do Pará - UFPA

### ABSTRACT

We evaluated the structure of the ichthyoplanktonic assemblage (taxonomic composition, abundance, developmental stages, and relationship with local environmental variables) in marginal lagoons located in the clearwater Tapajós and Trombetas rivers, Amazon Basin, Brazil during periods of high water (rising waters and flooding). Samples were collected by means of horizontal drags in the subsurface of the water with a plankton net (300 µm mesh). Sorting, counting, identification of biological material, and classification of embryonic and larval stages were performed under a stereoscopic microscope. A total of 122 eggs and 2,813 fish larvae were captured and distributed in nine orders, 18 families, 20 genera, and 26 species. Of these, more than 75% are considered sedentary or short-distance migrants and more than 50% are of commercial interest. The results revealed fluctuating patterns of abundance and species composition between the lagoons of the two rivers. The ichthyoplankton community in the lagoons consisted mainly of larvae of native pelagic fish belonging to the Engraulidae family and larvae of benthic fish such as Eleotridae, making up more than 85% of the individuals captured in the study area. In addition to these two groups, some larvae of piranha species (*Pygocentrus nattereri*) stood out due to their high densities in the Tapajós river lagoons and croaker larvae (*Plagioscion* spp.) in the Trombetas river lagoons. The highest larval densities were recorded during the night with significant variations recorded in species composition. The presence of all stages of larval development indicates that these biotopes enable growth and are essential for the biological recruitment of fish species in the region. The ichthyoplankton showed a low correlation with the limnological variables, however, the patterns of abundance and composition of fish larval assemblages in the lagoons of the Tapajós and Trombetas rivers were preliminarily elucidated, although additional work is needed to assess the effects on survival and recruitment.

**Keywords:** larval fish, composition, abundance, clear water, nursery.

### RESUMO

Avaliamos a estrutura da assembleia ictioplanctônica (composição taxonômica, abundância, estágios de desenvolvimento e relação com variáveis ambientais locais) em lagoas marginais localizadas nos rios de águas claras Tapajós e Trombetas, Bacia Amazônica, Brasil durante os períodos de águas altas (enchente e cheia). As amostras foram coletadas por meios de arrastos horizontais na subsuperfície da água com rede

de plâncton (malha 300 µm). A triagem, contagem, identificação do material biológico e a classificação dos estágios embrionário e larval foi realizado sob microscópio estereoscópico. Foram capturados 122 ovos e 2.813 larvas de peixes, distribuídas em 9 ordens, 18 famílias, 20 gêneros e 26 espécies. Destas, mais de 75% são consideradas como sedentárias ou migradoras de curta distância e mais de 50% são de interesse comercial. Os resultados revelaram padrões flutuantes de abundância e composição de espécies entre as lagoas dos dois rios. A comunidade ictioplanctônica nas lagoas consistiu principalmente de larvas de peixes pelágicos nativos pertencentes à família Engraulidae e larvas de peixes bentônicos como Eleotridae, perfazendo mais de 85% dos indivíduos capturados na área de estudo. Além desses dois grupos, algumas larvas de espécies de piranhas (*Pygocentrus nattereri*) se destacaram pelas elevadas densidades nas lagoas do rio Tapajós e larvas de pescadas (*Plagioscion* spp.) nas lagoas do rio Trombetas. As maiores densidades de larvas foram registradas durante o período noturno com variações significativas registrada na composição de espécies. A presença de todos os estágios de desenvolvimento larval indica que estes biótopos possibilitam o crescimento e são essenciais para o recrutamento biológico das espécies de peixes da região. O ictioplâncton apresentou baixa correlação com as variáveis limnológicas, no entanto, os padrões de abundância e composição das assembleias de larvas de peixes nas lagoas dos rios Tapajós e Trombetas foram elucidados preliminarmente, embora sejam necessários trabalhos adicionais, para avaliar os efeitos sobre a sobrevivência e recrutamento.

---

**Palavras-chave:** larvas de peixes, composição, abundância, águas claras, berçário.

## INTRODUCTION

The alluvial plain of numerous tributaries of the Amazon River basin presents a complex system of marginal lagoons that occupy lateral depressions of the rivers and are periodically flooded and connected to each other, channels, or neighboring river systems (Souza Filho & Stevaux, 1997, Junk *et al.*, 2012). Thus, they form a landscape mosaic that sustains great biodiversity of species and is essential for the sustainability of the Amazonian fisheries resources (Soares *et al.*, 2015; Hurd *et al.*, 2016; Zacardi, 2020). In these water bodies, biological processes and ecological functioning patterns are largely dependent on the hydrometric regime (flooding pulse), which promotes changes in the shape, size, and depth of the lagoons adjacent to the main river channel, contributing to the system homogenization (Junk *et al.*, 2012.; Ortega *et al.*, 2015).

The expansion of flooding in the environment enables greater exchanges of water, sediments, minerals, and organisms between different biotopes, in addition to promoting physical and chemical changes such as changes in temperature, turbidity, and the input nutrients (Thomaz *et al.*, 2007; Starr *et al.*, 2014). These factors govern, in part, the trophic state, composition, and growth of planktonic assemblages and other aquatic organisms, producing variations in the structure of fish communities and in ichthyoplankton distribution patterns (Tondato *et al.*, 2010; Siqueira-Souza *et al.*, 2016; Sahoo *et al.*, 2017; Zacardi *et al.*, 2019). Marginal lagoons are recognized for their importance in maintaining regional biodiversity, either as natural breeding grounds for commercially valuable fish species (Ponte *et al.*, 2019; Oliveira *et al.*, 2022) or as a preferential habitat for non-migratory and small-scale species (Tondato *et al.*, 2010; Beltrão & Soares, 2018).

However, climate change and expansion of anthropic activities (i.e., agricultural expansion, introduction of exotic species, overfishing, destruction of riparian forests to create pastures, pollution, fires, illegal mining, and damming of rivers) lead to several changes in the dynamics and configuration of drainage basins (Sodré *et al.*, 2015; Sousa *et al.*, 2021; Prestes *et al.*, 2022; Cajado *et al.*, 2022). These interferences in the environment have direct consequences on fish communities and can directly affect migration, reproduction, spawning, larval development, and consequently, biological recruitment (Camargo & Camargo, 2012; Castello & Macedo, 2016; Oliveira *et al.*, 2022; Pereira *et al.*, 2023). In addition, such interference negatively reflects fishing productivity and causes socioeconomic impacts on the Amazonian populations that depend on these resources for their survival.

Despite the abundance of lagoons ecosystems in the Amazon region, relatively few studies on ichthyoplankton have been performed in these biotopes. Among these are Ponte *et al.* (2019), Zacardi *et al.* (2020), Reis *et al.* (2020), Zacardi and Ponte *et al.* (2021), and Oliveira *et al.* (2022). Except for the last one was carried out in the Juá lagoon (Tapajós river), all the others address composition and seasonality of the ichthyoplankton in floodplain lagoons of white-water systems, such as Solimões and Amazonas. Some

lagoons along the Tapajós and Trombetas rivers have relatively well-known ichthyofauna (Silva *et al.*, 2006; Soares, 2015; Soares *et al.*, 2015; Silvano, 2020), but with incomplete or non-existent information about species that use their waters as spawning grounds and nursery.

Ichthyoplankton studies provide a base of information involving major population changes of fish species and can serve as a sensitive indicator to monitor the potential effects of recruitment in lagoons, main river channels, and connected habitats such as the river-floodplain system (Amorim *et al.*, 2017, Gao *et al.*, 2018; Vorsatz *et al.*, 2021), in addition to predicting the implications of human activities on the ecosystem and fisheries. Therefore, they represent an important component in the assessment of fish stocks. In this context, this study aimed to characterize the taxonomic composition and evaluate the abundance of fish larvae assemblages in lagoons, seeking to answer the following questions: 1) Is there a difference in taxonomic composition and abundance of fish larvae during the flooding phase in the marginal lagoons of the Tapajós and Trombetas rivers? 2) Are marginal lagoons in clearwater tributaries of the Amazon basin essential biotopes for development of early stages of the fish life cycle?

## MATERIALS AND METHODS

### STUDY AREA

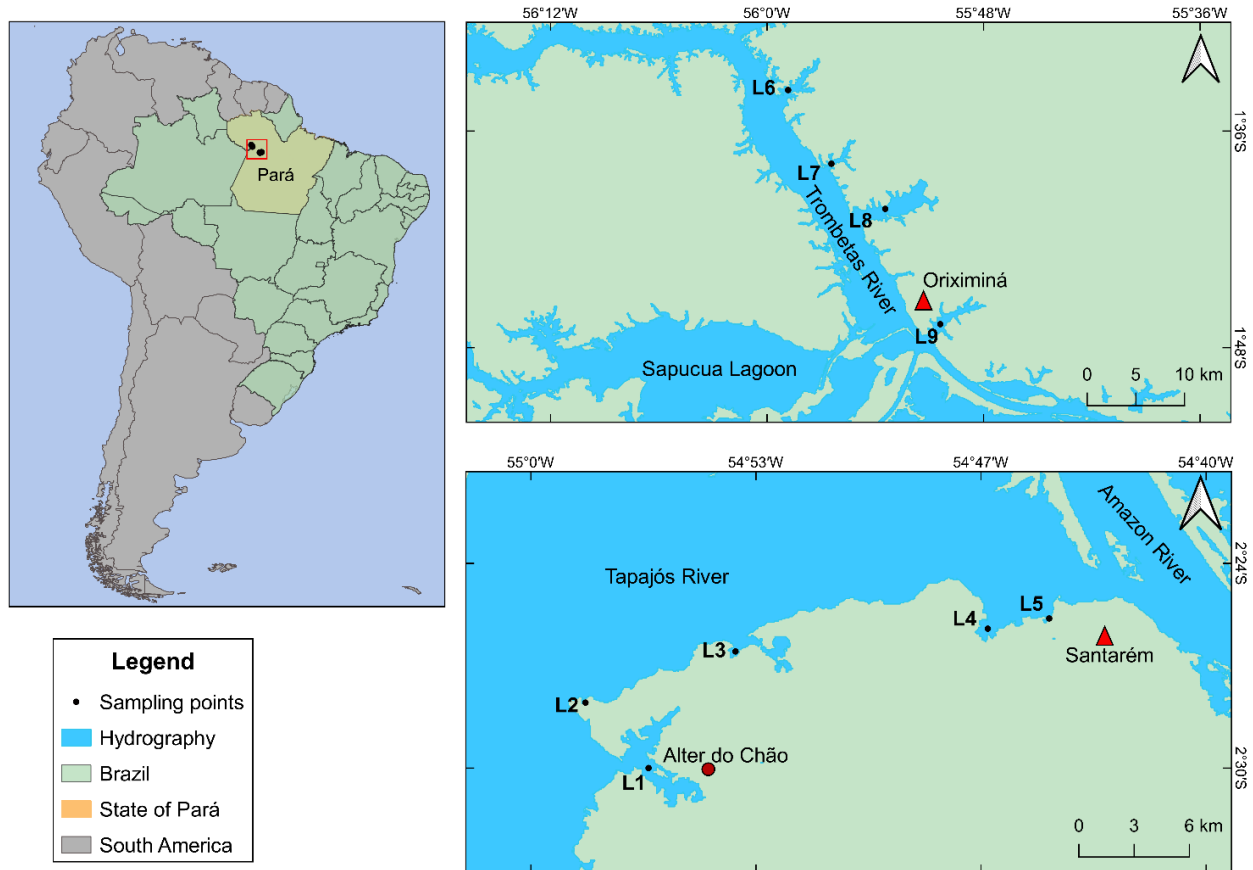
The study area includes marginal lagoons in the floodplain of the Tapajós and Trombetas rivers - two clearwater tributaries of the Amazon River, Pará, Brazil (Table 1). The Tapajós River is a tributary of the right bank of the Amazon River, its watershed has about 764,183 km<sup>2</sup> and is located between latitudes 02°14'38" S and 14°67'38.4" S and longitudes 53°49'34" W and 60°8'42" W. It is formed by the union of the Juruena and São Manuel rivers (Teles Pires), is about 851 km long, carries few suspended materials, and has low conductivity and a pH that varies from 4.5 to 7.8 (Araújo *et al.*, 2015). The Trombetas River is a tributary of the left bank of the Amazon River, its watershed has about 129,900 km<sup>2</sup> and is located between latitudes 02°36'36" N and 02°06'00" S and longitudes of 55°11'24" W and 59°02'24" W. It is formed by the union of the Poana and Anamu rivers that have their sources in region of the Acaraí and Tumucumaque mountains, with about 760 km in length between its river-source and mouth in the Amazon River (Ferreira, 1993; Mendel Junior 2022).

Seasonality of precipitation and flow regime is different between the sub-basins, as in the Tapajós river basin rainy season occurs between January and June, and dry season from July to December, and in the Trombetas river basin rainy season is from April to September, and dry season from October to March (Tomasella *et al.*, 2013; Coutinho *et al.*, 2019). The average annual rainfall is 2,100 mm but varies between 1,500 to 2,900 mm. In general, the region has a humid tropical climate with an average annual temperature between 26 and 27 °C (Hales & Petry, 2015).

In the Tapajós River, five lagoons were sampled (L1: Verde, L2: Piranha, L3: Tapari, L4: Juá, and L5: Mapiri) and in the Trombetas River four lagoons (L6: Caipuru, L7: Curupira, L8: Iripixi, and L9: Xiriri) (Figure 1). The lagoons are connected to the main rivers due to the increase in the water level and occupation of the floodplain during the floods, as they are subject to the average annual fluctuation of river levels (around five to six meters), with the highest levels fluvial registered in the months of May and June, and the smallest in the months of October and November. It is noteworthy that some lagoons receive drainage from streams with springs in areas of *terra firme* (areas that are not subject to flooding because they are located in a higher region of the Amazonian relief) and may be strongly influenced by white-waters rich in suspended material due to the backflow of the Amazon River, as is the case of the Mapiri and Juá lagoons at mouth of the Tapajós River, and Iripixi and Caipuru at mouth of the Trombetas River.

### SAMPLING

Samplings were carried out in the flooding phase of the rivers in March 2020 (end of rising water) and May 2021 (flooding), during the day and night on board a local vessel through horizontal drags carried out in the subsurface of the water column (0 - 0.5 meters) at reduced speed (2 km/h) and constant for 10 minutes to increase the capture efficiency, using a conical plankton net (300 µm mesh), with flowmeter attached at mouth of the net to obtain the volume of filtered water. Triplicates were performed because in all lagoons three sections were defined, each with two sampling points: left margin (M1 and M2), middle (M3 and M4), and right margin (M5 and M6).



**Figure 1:** Location of sampled lagoons in the floodplain of the Tapajós and Trombetas rivers, Lower Amazon, state of Pará, Brazil. Tapajós River Lagoons: L1 = Verde Lagoon, L2 = Piranha Lagoon, L3 = Tapari Lagoon, L4 = Juá Lagoon, and L5 = Mapiri Lagoon. Trombetas River Lagoons: L6 = Caipuru Lagoon, L7 = Curupira Lagoon, L8 = Iripixi Lagoon, and L9 = Xiriri Lagoon).

**Table 1.** Geographical data on the location of marginal lagoons in the floodplain of the Tapajós and Trombetas rivers, Lower Amazon, state of Pará, Brazil.

River	Locality	Coordinates
Tapajós River	Tapari Lagoon	2°26'35" S / 54°54'00" W
	Piranha Lagoon	2°28'05" S / 54°58'24" W
	Juá Lagoon	2°25'55" S / 54°46'36" W
	Verde Lagoon	2°30'00" S / 54°56'33" W
	Mapiri Lagoon	2°25'37" S / 54°44'48" W
Trombetas River	Caipuru Lagoon	1°40'19" S / 55°53'27" W
	Curupira Lagoon	1°33'44" S / 55°58'50" W
	Iripixi Lagoon	1°46'42" S / 55°50'24" W
	Xiriri Lagoon	1°37'49" S / 55°56'26" W

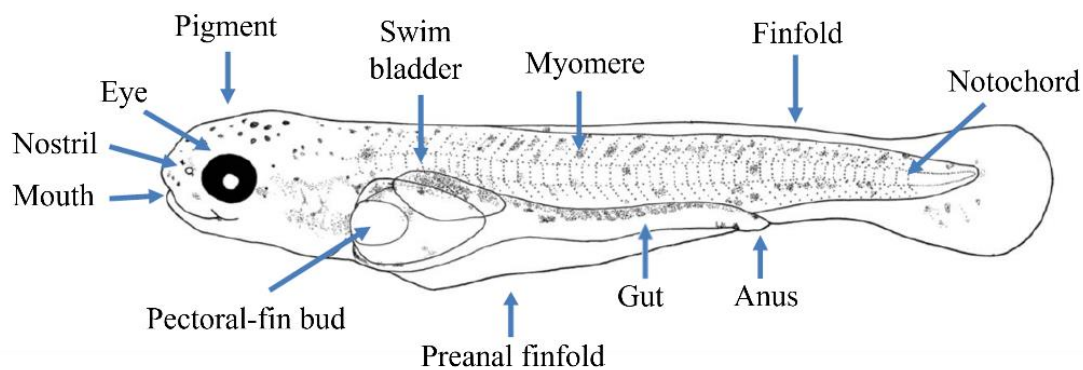
After the draging, a eugenol solution (clove oil - 50 mg. L<sup>-1</sup>) was added to each sample for 10 minutes, to anesthetize/ethanize the organisms present in it. Then, they were preserved in formalin diluted at 10% and placed in properly labeled 500 ml polyethylene bottles. The samples were transported for analysis at the Laboratório de Ecologia do Ictioplâncton e Pesca em Águas Interiores of the Universidade Federal do Oeste do Pará. The sampling effort totaled 216 final

samples (9 lagoons x 3 sections x 3 points per section x 2 sampling times - day and night x 2 phases of the local hydrological cycle - rising waters and flooding).

Limnological variables such as water temperature ( $^{\circ}\text{C}$ ), dissolved oxygen ( $\text{mg. L}^{-1}$ ), electrical conductivity ( $\mu\text{S. cm}^{-1}$ ), hydrogen potential (pH) and turbidity (NTU) were obtained in loco concomitantly to the sampling drags using digital potentiometers. Water transparency (m) was measured through a Secchi disc. Ichthyoplankton were collected under permit Instituto Brasileiro do Meio Ambiente e dos Recursos Naturais Renováveis (IBAMA) license number 72.330 issued based on the Normative Instruction number 154/2007.

## PROCESSING OF SAMPLES

In the laboratory, the samples were washed and prepared for the sorting process, which consists of separating fish eggs and larvae from suspended material, debris and total plankton under a stereoscopic microscope using Bogorov plates with the aid of stylets, brushes, tweezers and Pauster pipettes. After sorting, the ichthyoplankton was quantified and the larvae identified at the lowest possible taxonomic level using specialized bibliographies and the regressive sequence of development technique, as recommended by Ahlstrom and Moser (1976) and described by Nakatani *et al.* (2001), which consists of identification through morphological, meristic and morphometric analysis from a sequence of individuals in different stages, from juveniles or more developed larvae to newly hatched larvae. Among the characters used for identification, the following were considered: body shape, pigmentation pattern, fin formation sequence, presence, or absence of barbels, relative position of the anal opening in relation to the body, eye diameter, digestive tract shape and for the swim bladder, number of myomeres, rays and fin spines (Figure 2).



**Figure 2.** Illustration of a curimatá larva (*Prochilodus nigricans*) indicating the main structures observed for identification. Adapted from Silva *et al.* (2022).

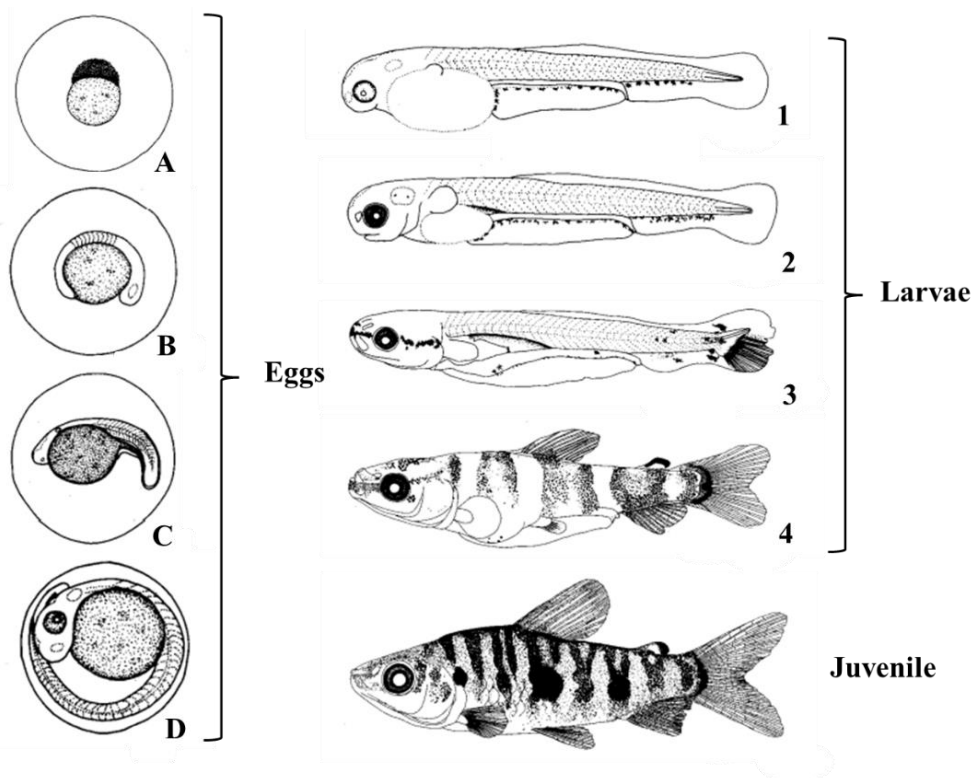
Taxonomic classification of species followed Frickle *et al.* (2022) and classification of orders was presented in alphabetical order according to Betancur-R *et al.* (2017), except for Characiformes, in which the classification by Oliveira *et al.* (2011) and Achiridae (Girard *et al.*, 2020). The larvae designated as “unidentified” corresponded to individuals with damaged structures and/or in a very early stage of development.

The eggs were classified as pelagic or free, considering the size of the perivitelline space (larger in migratory species and without parental care), demersal, with a greater amount of yolk and reduced perivitelline space, and adhesive, those that present structures in your chorion that help with stickiness. The eggs were classified according to the stages of embryonic development (Figure 3), proposed by Ahlstrom & Ball (1954) and modified by Nakatani *et al.* (2001): a) initial cleavage - stage in which the formation of the first cells occurs, including the stages of morula, blastula and gastrula; b) early embryo - stage in which embryo differentiation and tail formation occur; c) free tail embryo - stage in which the tail detaches from the yolk; and d) final embryo - stage in which the embryo is practically formed and ready for hatching.

The larvae were categorized according to the flexion of the final section of the notochord and the sequence of development of the fins and their support elements, comprising four stages (Figure 3): a) yolk-sac larval - from hatching to when the larvae have a complete eye or partially pigmented, opening of anus and mouth; b) pre-flexion - extends from the opening of the anus and mouth to the beginning of notochord

flexion, with the appearance of the first support elements of the caudal fin; c) flexion - characterized by the beginning of flexion of the notochord with the appearance of the support elements of the caudal fin until its complete flexion and appearance of the pelvic fin bud; and d) post-flexion - from complete flexion of the notochord and appearance of the pelvic-fin bud until the complete formation of pectoral-fin rays and total absorption of the embryonic fin.

Individuals considered juveniles were those that showed complete formation of the rays of all fins, the appearance of scales until the first sexual maturation. The identified specimens were stored in properly identified glass vials containing 4% formaldehyde. The most complete individuals are being used as testimony specimens and deposited in the Collection of Fish Eggs and Larvae (CROLP) of the Universidade Federal do Oeste do Pará (UFOPA).



**Figure 3.** Illustration indicating the different periods and stages of early development of freshwater fish. Embryonic period: A - Early cleavage, B - Early embryo, C - Free tail embryo and C - Final embryo. Larval period: 1 - Yolk-sac larval, 2 - Pre-flexion, 3 - Flexion and 4 - Post-flexion, and juvenile individual. Adapted from Nakatani *et al.* (2001).

## DATA ANALYSIS

Ichthyoplankton abundances were standardized for a volume of  $10 \text{ m}^{-3}$  of filtered water (number of organisms per  $10 \text{ m}^{-3}$ ) as proposed by (Nakatani *et al.*, 2001):  $Y = (X/V) \times 10$ , where Y represents the density of eggs or larvae in  $10 \text{ m}^{-3}$ , X represents the number of captured eggs or larvae, and V represents the volume of filtered water. For Principal Component Analysis (PCA), environmental data were subjected to z-score transformation to standardize variable scales (Gotelli & Ellison, 2013).

The PCA was used to reduce the dimensions of environmental variables and examine the existence of environmental differences between lagoons. Axes with eigenvalues greater than 1.0 were used for interpretation, according to the Kaiser-Guttman criterion. Only variables with score coefficients  $>0.4$  were considered biologically important (Gotelli & Ellison, 2013). Permutation Multivariate Analysis of Variance (PERMANOVA) (Anderson 2001) using Bray-Curtis similarity matrix and randomizations (9999 permutations) was used to verify the existence of differences in spatial distribution patterns (between lagoons and rivers) and temporal (day and night) on the composition and abundance of fish larval assemblages. A percentage similarity analysis (SIMPER) was conducted to emphasize the main taxa responsible for the formation of the delineated groups. Scatterplots and Spearman correlation tests were used to assess the correlation between environmental variables and egg and larvae density.



## RESULTS

Of the total ichthyoplankton captured, 4.16% (n= 122) was represented by eggs belonging to the non-migratory category in the initial cleavage stage and obtained only in the Piranha lagoon near Alter-do-Chão (Santarém, state of Pará). The marginal lagoons of the Tapajós River contributed with 2,070 individuals and marginal lagoons of the Trombetas River with 743 individuals, totaling 2,813 larvae (95.84%), distributed in nine orders, 18 families, 20 genera and 26 species (Table 2). Of these, more than 75% are considered sedentary or short-distance migratory and more than 50% are larvae of species of commercial interest in the Amazonian region.

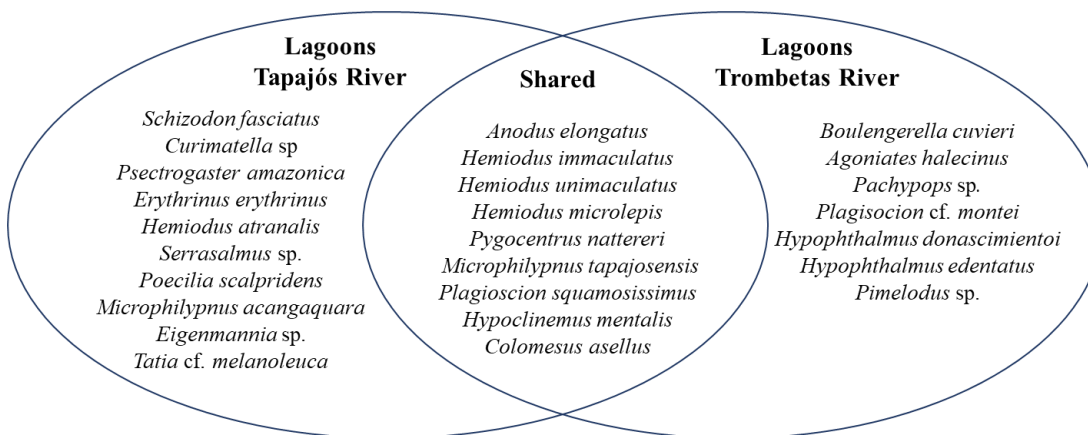
**Table 2.** Taxonomic composition and average density (ind.10m<sup>-3</sup>) of ichthyoplankton captured in the marginal lagoons of the Tapajós and Trombetas rivers, state of Pará, Brazil.

Taxa	N	Tapajós River Lagoons			Trombetas River Lagoons					
		Juá	Verde	Mapiri	Piranha	Taparí	Caipuru	Curupira	Iripixi	Xiriri
<b>CARANGIFORMES</b>		-	-	-	-	-	-	-	-	-
ACHIRIDAE		-	-	-	-	-	-	-	-	-
<i>Hypoclinemus mentalis</i>	4	-	-	-	0.03	-	-	-	0.01	-
<b>CHARACIFORMES</b>		-	-	-	-	-	-	-	-	-
ANOSTOMIDAE		-	-	-	-	-	-	-	-	-
<i>Schizodon fasciatus</i>	1	-	-	-	0.01	-	-	-	-	-
CHARACIDAE	4	-	-	0.01*	-	0.08*	-	-	-	-
CTENOLUCIIDAE		-	-	-	-	-	-	-	-	-
<i>Boulengerella cuvieri</i>	2	-	-	-	-	-	-	0.02	-	-
CURIMATIDAE		-	-	-	-	-	-	-	-	-
<i>Curimatella</i> sp.	20	-	-	1.41	0.22	-	-	-	-	-
<i>Psectrogaster amazonica</i>	3	-	-	0.17	-	-	-	-	-	-
ERYTHRINIDAE		-	-	-	-	-	-	-	-	-
<i>Erythrinus erythrinus</i>	8	-	-	-	-	0.19	-	-	-	-
HEMIODONTIDAE	21	0.03*	-	-	0.18*	0.02*	-	0.03*	-	0.10*
<i>Anodus elongatus</i>	16	-	-	0.17	-	-	-	0.02	-	-
<i>Hemiodus atranalis</i>	3	-	-	0.04	-	-	-	0.01	-	-
<i>Hemiodus immaculatus</i>	4	0.03	-	0.05	-	-	-	-	-	-
<i>Hemiodus microlepis</i>	5	-	-	0.23	0.02	-	-	0.01	-	-
<i>Hemiodus unimaculatus</i>	5	-	-	0.13	-	-	-	-	-	-
SERRASALMIDAE		-	-	-	-	-	-	-	-	-
<i>Pygocentrus nattereri</i>	48	1.14	-	2.19	0.08	-	-	-	0.07	-
<i>Serrasalmus</i> sp.	52	-	-	0.70	0.02	-	-	-	-	-
TRIPORTHEIDAE		-	-	-	-	-	-	-	-	-
<i>Agoniates halecinus</i>	2	-	-	-	-	-	-	-	0.01	0.02
<b>CLUPEIFORMES</b>		-	-	-	-	-	-	-	-	-
ENGRAULIDAE		-	-	-	-	-	-	-	-	-
Engraulidae gen. sp.	1490	5.01	3.09	9.23	6.52	3.87	0.92	2.29	2.98	3.89
<b>CYPRINODONTIFORMES</b>		-	-	-	-	-	-	-	-	-
POECILIIDAE		-	-	-	-	-	-	-	-	-
<i>Poecilia scalpridens</i>	11	-	-	0.22	-	-	-	-	-	-
<b>GOBIIFORMES</b>		-	-	-	-	-	-	-	-	-
ELEOTRIDAE		-	-	-	-	-	-	-	-	-
<i>Microphilypnus tapajosensis</i>	945	3.53	2.38	21.60	4.96	1.94	0.47	0.77	4.71	3.06
<i>Microphilypnus acangaquara</i>	13	-	-	-	-	0.31	-	-	-	-
<b>GYMNOTIFORMES</b>		-	-	-	-	-	-	-	-	-
STERNOPYGIDAE		-	-	-	-	-	-	-	-	-
<i>Eigenmannia</i> sp.	1	-	-	-	-	0.02	-	-	-	-
<b>INSERTAE SEDIS</b>		-	-	-	-	-	-	-	-	-
SCIAENIDAE	8	-	-	-	-	-	-	0.05*	-	0.04*
<i>Pachypops</i> sp.	10	-	-	-	-	-	-	0.05	-	0.10
<i>Plagioscion cf. montei</i>	79	-	-	-	-	-	1.36	1.23	0.03	0.22
<i>Plagioscion squamosissimus</i>	16	0.01	0.56	-	-	-	-	0.03	0.01	0.02
<b>SILURIFORMES</b>		-	-	-	0.02*	-	-	-	-	-
AUCHENIPTERIDAE		-	-	-	-	-	-	-	-	-
<i>Tatia cf. melanoleuca</i>	2	-	0.02	-	-	0.02	-	-	-	-
DORADIDAE		-	-	-	-	-	-	-	-	-
Doradidae gen. sp.	1	-	-	0.01*	-	-	-	-	-	-

PIMELODIDADE	-	-	-	-	-	-	-	-	-	-
<i>Hypophthalmus donascimientoi</i>	2	-	-	-	-	-	-	-	-	0.03
<i>Hypophthalmus edentatus</i>	2	-	-	-	-	-	-	-	0.02	-
<i>Pimelodus</i> sp.	15	-	-	-	-	-	-	-	0.37	-
<b>TETRAODONTIFORMES</b>	-	-	-	-	-	-	-	-	-	-
<b>TETRAODONTIDAE</b>	-	-	-	-	-	-	-	-	-	-
<i>Colomesus asellus</i>	12	0.01	0.04	0.01	-	-	0.01	0.01	0.28	-
<b>Unidentified</b>	6	-	-	-	0.05*	-	0.18*	-	-	-
<b>Eggs</b>	122	-	-	-	1.33	-	-	-	-	-
<b>Ichthyoplankton total</b>	2,935	9.76	6.09	35.99	13.21	6.45	2.94	4.52	8.49	7.39

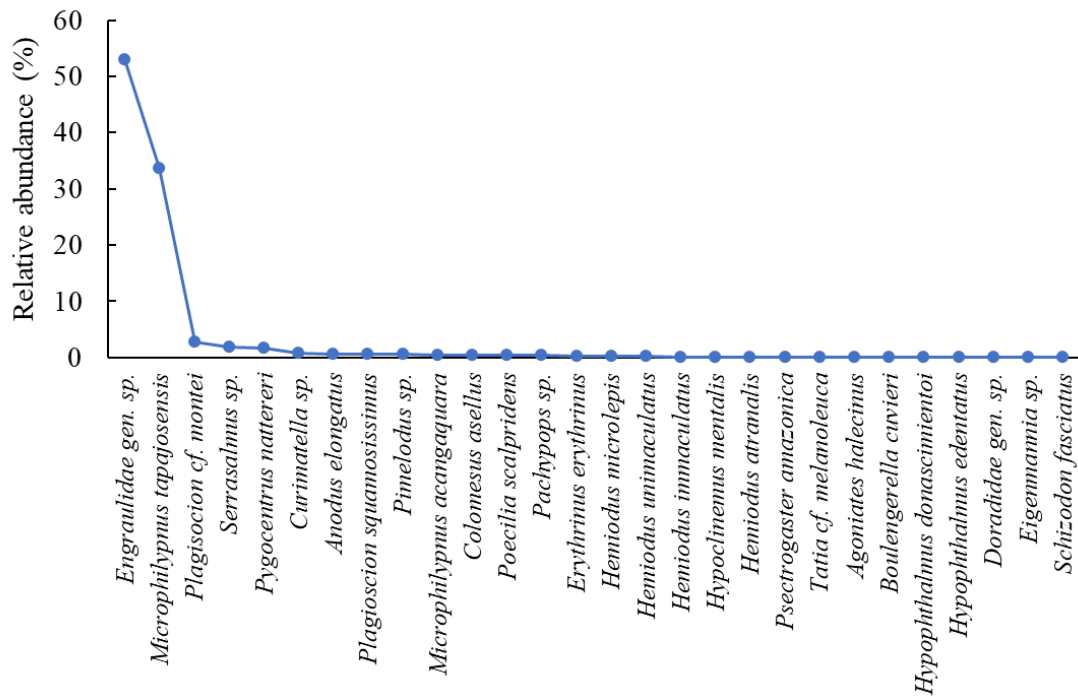
\* Damaged larvae or in very early stages of development, making identification at lower taxonomic levels impossible.

The lagoons of both rivers share nine species (Figure 4). Some, such as *Schizodon fasciatus*, *Curimatella* sp., *Psectrogaster amazonica*, *Microphilypnus acangaquara*, *Poecilia scalpridens*, *Serrasalmus* sp., *Tatia* cf. *melanoleuca*, *Eigenmannia* sp., *Hemiodus immaculatus*, *H.unimaculatus*, *Plagioscion squamosissimus*, Doradidae gen. sp. and *Erythrinus erythrinus* were captured only in the Tapajós River lagoons. While *Agoniates halecinus*, *Boulengerella cuvieri*, *Hypophthalmus donascimientoi*, *H. edentatus*, *Pachypops* sp. occurred only in the lagoons of the Trombetas river. Individuals with damaged structures or in very early stages of development accounted for less than 1% of the collected material.



**Figure 4.** Larvae of fish species recorded in the marginal lagoons of the Tapajós and Trombetas rivers, Lower Amazon, state of Pará, Brazil

The larval density varied among the lagoons. In the Tapajós river lagoons, highest densities were recorded in the Mapiri (37.99 larvae.10m<sup>-3</sup>) and Piranha (13.21 larvae.10m<sup>-3</sup>), while in the Trombetas river lagoons, highest densities were in Iripixi (8.49 larvae.10m<sup>-3</sup>) and Xiriri (7.39 larvae.10m<sup>-3</sup>). The orders with the greatest diversity of families were the Characiformes and Siluriformes, which also had the greatest numerical abundance of species in the Tapajós River lagoons. In other hand, for Trombetas river lagoons, the order Characiformes was most diverse, and other orders presented similar numbers of families and species (between one and two species – Table 2). Although Characiformes and Siluriformes have greater taxonomic diversity, the orders Clupeiformes and Gobiiformes, represented by families Engraulidae and Eleotridae (*Microphilypnus* spp.), respectively, were the dominant groups, comprising more than 85% of individuals captured throughout study area (Figure 5). No significant difference was found in the variation of larval abundance of the two most abundant taxa among the lagoons studied in this period.



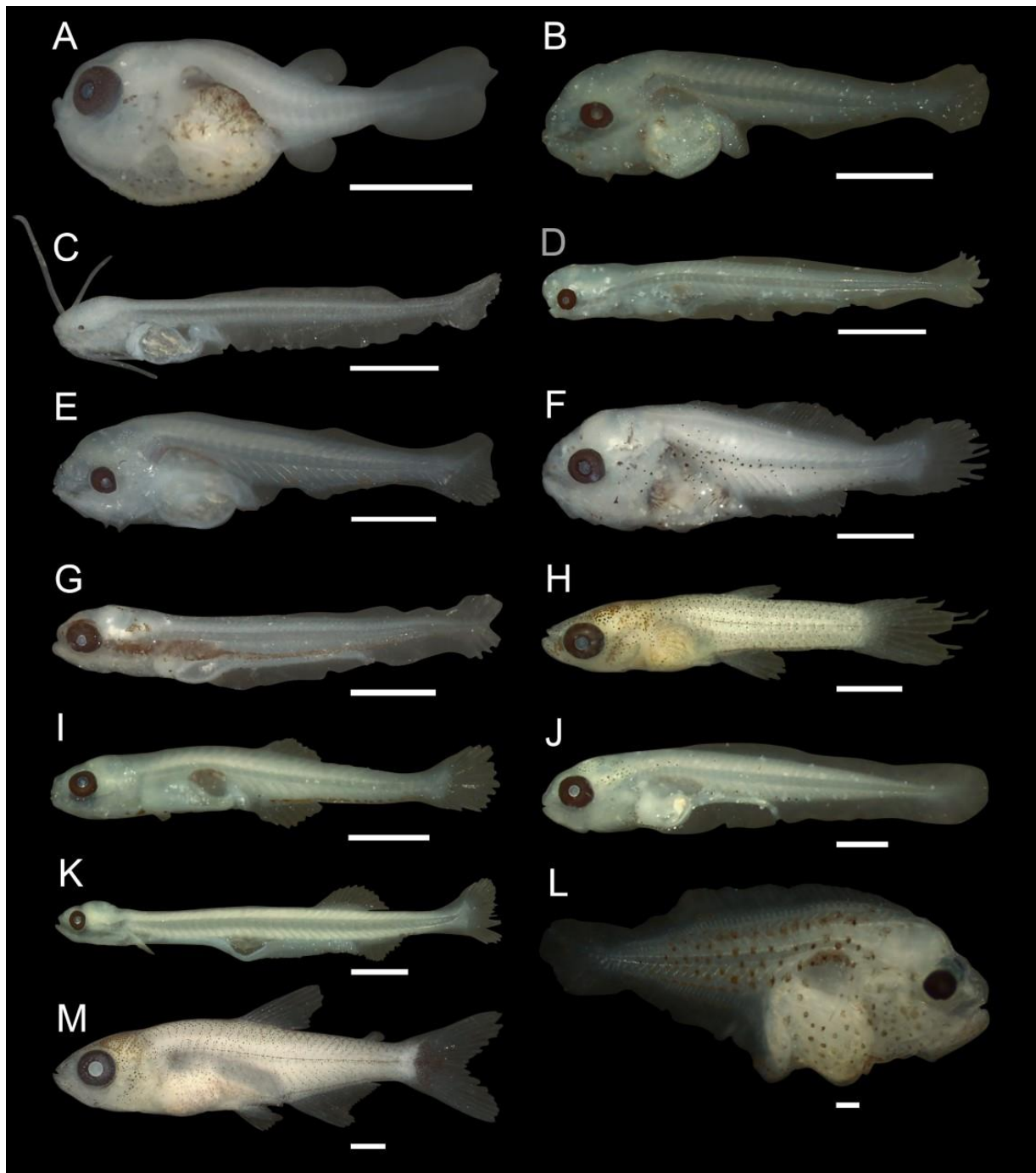
**Figure 5.** Ranking of the relative abundance of fish larvae taxa captured in the marginal lagoons of the Tapajós and Trombetas rivers, Lower Amazon, state of Pará, Brazil

The composition of the larval community was similar between the lagoons (Pseudo-F = 1.581;  $R^2 = 0.085$ ;  $p = 0.051$ ), regardless of the river, with dominance of the species *M. tapajosensis* and *Engraulidae gen. sp.* Despite the high densities of these two groups, some species such as freshwater croaker (*Plagioscion cf. montei*) in the Caipuru, Curupira, and Xiriri lagoons, the pufferfish (*C. asellus*) in the Iripixi lagoon, the piranhas (*Pygocentrus nattereri*; *Serrasalmus sp.*) in the Juá, Mapiri, and Piranha lagoons and the little-pocomon (*M. acanguaquara*) also highlighted for their high densities (Figure 6).

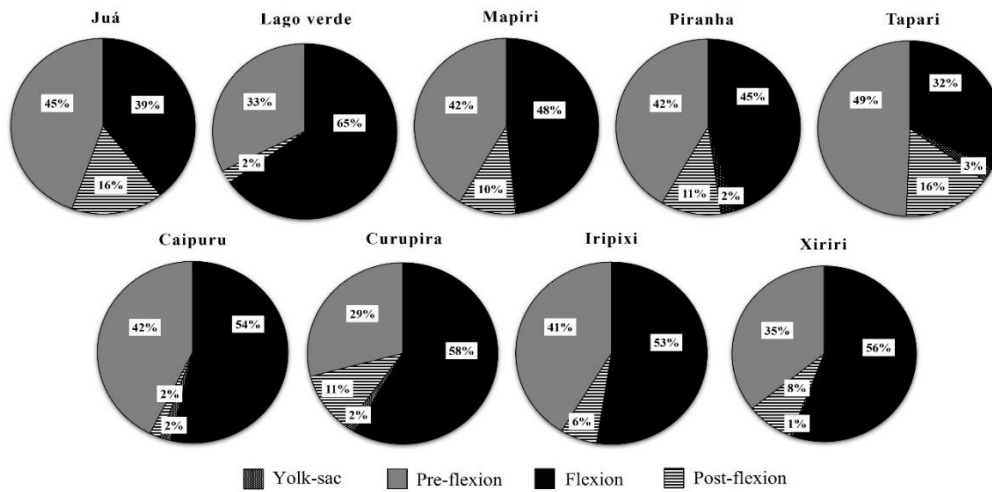
The highest larval densities were recorded during the night (20.12 larvae.10m<sup>-3</sup> vs. 1.73 larvae.10m<sup>-3</sup> during the day) with significant variations in composition (Pseudo-F = 3452;  $R^2 = 0.023$ ;  $p = 0.020$ ). The greatest richness was recorded during nocturnal sampling and some species were exclusive to this period, such as for example *Psectrogaster amazonica*, *P. nattereri* and *Hypophthalmus edentatus*. However, *Poecilia scalpridens* and *Plagioscion squamosissimus* larvae were captured exclusively during the day in the lagoons, indicating that the larvae of some species tend to concentrate in the first layers of the water column during the daily shifts (active vertical migratory behavior).

Apart from the Juá, Verde, Mapiri, and Iripixi lagoons, all initial stages of development were recorded, with a greater contribution of larvae in flexion and pre-flexion (Figure 7). All identified yolk-sac larvae individuals belong to the Hemiodontidae family, which indicates that the lagoons are close to or are used as spawning areas by this group of fish.

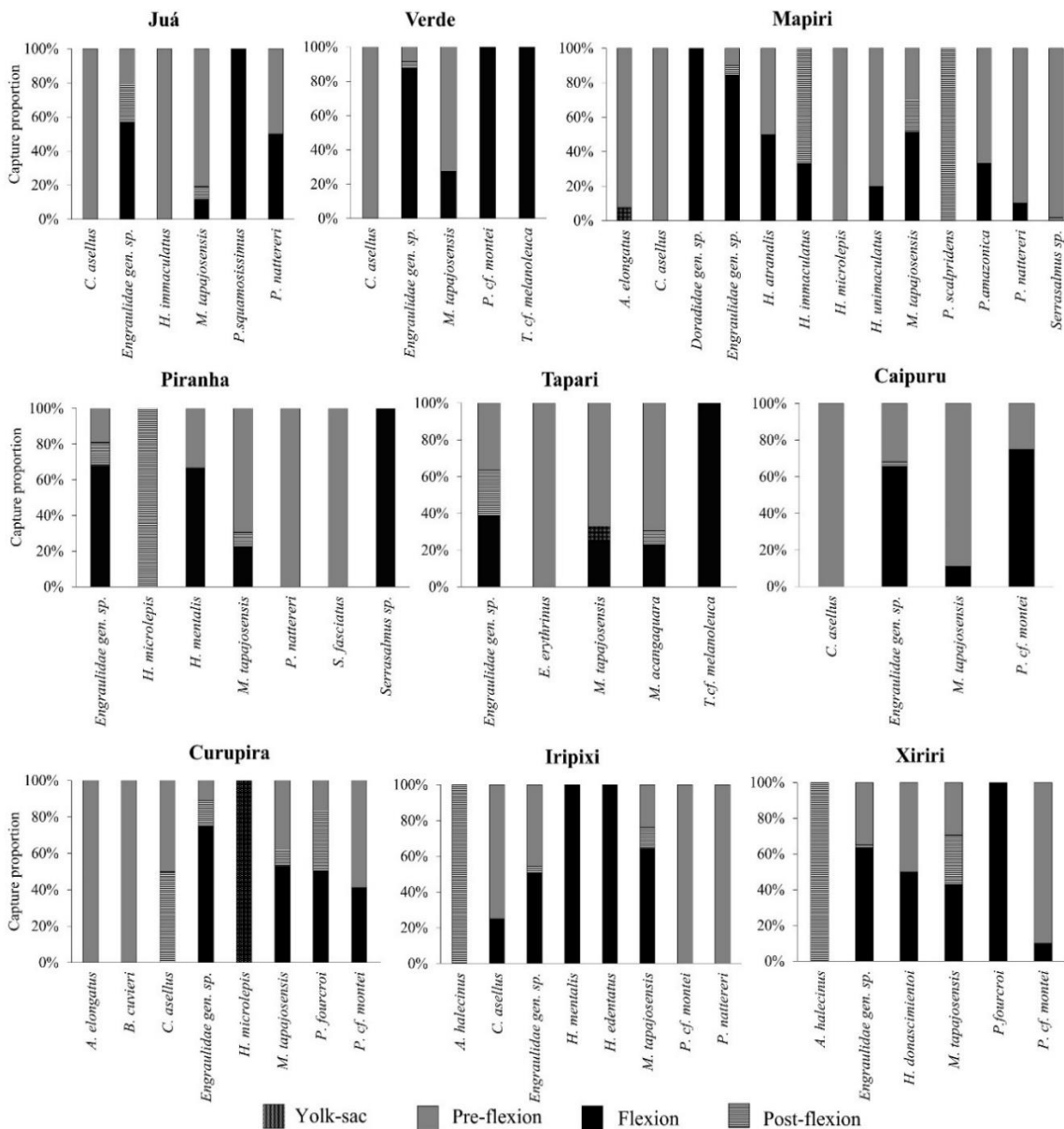
Several species had more than two developmental stages captured in the lagoons: *M. tapajosensis*, *M. acanguaquara*, *Engraulidae gen. sp.*, *A. elongatus*, *C. asellus*, *H. atranalis*, *H. immaculatus*, *H. unimaculatus*, *H. mentalis*, *H. donascimentoi*, *Pachypops sp.*, *P. cf. montei*, *P. nattereri*, *P. amazonica* and *Serrasalmus sp.*, highlighting the relevance of these biotopes as appropriate places for the development of the initial life cycle of several species of fish (Figure 8).



**Figure 6.** Images of some larval fish collected during samplings from lagoons, at the mouth of the Tapajós e Trombetas rivers, state of Pará, Brazil: A) *Colomesus asellus* - 3.48 mm; B) *Plagioscion squamosissimus* - 4.47 mm; C) *Hypophthalmus edentatus* - 4.93 mm; D) *Schizodon fasciatus* - 4.87 mm; E) *Plagioscion cf. montei* - 5.11 mm; F) *Pachypops* sp. - 5.08 mm; G) *Boulengerella cuvieri* - 5.14 mm; H) *Poecilia scalpridens* - 5.11 mm; I) *Microphilypnus tapajosensis* - 5.06 mm; J) *Pygocentrus nattereri* - 7.95 mm; K) Engraulidae - 7.29 mm; L) *Hypoclinemus mentalis* - 3.56 mm; M) Characidae - 10.89 mm. Bars = 1 mm.

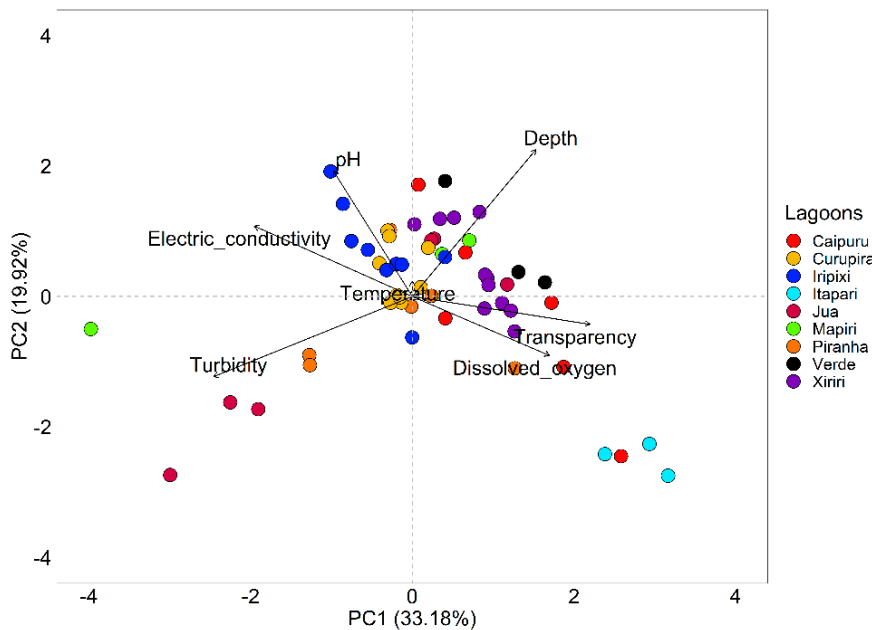


**Figure 7.** Relative contribution of early development stages captured in the marginal lagoons of the Tapajós and Trombetas rivers, Lower Amazon, state of Pará, Brazil



**Figure 8.** Relative proportion values of early developmental stages by captured taxa in the marginal lagoons of the Tapajós and Trombetas rivers, Lower Amazon, state of Pará, Brazil

The environmental variables measured during study showed little variability, showing limnological uniformity (Figure 9), being relatively hot ( $>28$  °C), slightly acidic ( $< 7$ ), low turbidity, high transparency ( $>150$  cm) and good oxygenation ( $>5$  mg. L<sup>-1</sup>). It stands out the Itapari lagoon, which presented the lowest mean values of electrical conductivity, turbidity and pH, and the highest dissolved oxygen rate among the sampled points and lagoons (Table 3).

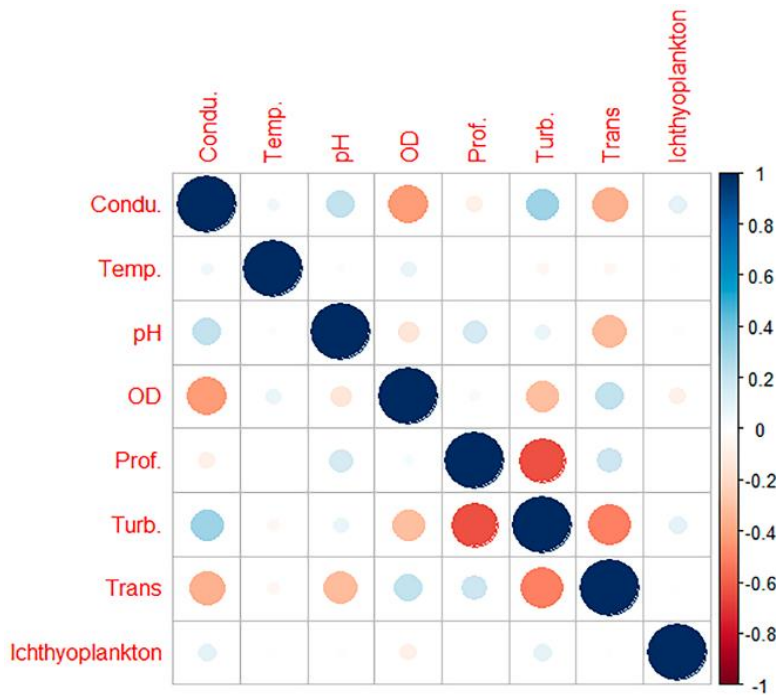


**Figure 9.** PCA analysis between the environmental variables measured along the sampling points in the marginal lagoons of the Tapajós and Trombetas rivers, Lower Amazon, state of Pará, Brazil

**Table 3.** Mean values of environmental variables measured along the sampling points in the marginal lagoons of the Tapajós and Trombetas rivers, Lower Amazon, state of Pará, Brazil

Environmental variables	Tapajós River Lagoons					Trombetas River Lagoons			
	Juá	Verde	Mapiri	Piranha	Taparí	Caipuru	Curupira	Iripixi	Xiriri
Electrical conductivity ( $\mu\text{S. cm}^{-1}$ )	12.3	10.4	16.7	12.6	4.8	11.1	14.2	16.6	11.4
Temperature (°C)	29.8	29.9	29.9	29.6	30.3	30.7	31.7	31.8	31.6
pH	6.83	6.86	6.51	6.23	5.31	6.64	5.68	6.45	5.24
Dissolved oxygen (mg. L <sup>-1</sup> )	5.7	5.2	5.5	5.9	8.6	5.8	5.3	5.8	6.1
Turbidity (NTU)	3.79	4.01	4.38	4.47	1.98	2.37	2.59	3.88	3.79
Transparency (cm)	250	280	245	180	280	180	160	165	175
Depth (cm)	675	830	780	600	450	750	570	650	820

The ichthyoplankton showed a low correlation with the limnological variables measured in the lagoons during the flood periods (Figure 10). The variability of these factors occurs throughout the year and is linked to the seasonality of rainfall and water level fluctuations, which reinforces the importance of sampling covering longer period scales, covering all phases of the local hydrological cycle or months of the year instead than just during high waters.



**Figure 10.** Spearman correlation between ichthyoplankton density and measured environmental variables in the marginal lagoons of the Tapajós and Trombetas rivers, Lower Amazon, state of Pará, Brazil.

## DISCUSSION

Our results demonstrate that the larval community structure is similar between lagoons of the different drainages of clearwater rivers, dominated mainly by larvae of Engraulidae and Eleotridae. Although the taxonomic composition is similar, some species were exclusive to the lagoons of each river. The presence of larvae in all ontogenetic stages indicates that the marginal lagoons act as nurseries and recruitment sites for the fish species. The presence of eggs in Piranha Lagoon shows reproductive and spawning activity in the area. However, the absence of eggs in the other lakes may be related to the fact that the embryonic development of the resident fish species is relatively fast, seasonality and short reproductive periods, synchronous spawning, and in very specific places (Castro *et al.*, 2002; Araújo, 2009).

The wide distribution of fish larvae occurring in all lagoons sampled demonstrates the importance of these biotopes adjacent to clearwater rivers as breeding and development sites for several species of fish. This occurs mainly for the small and resident species, with all their life cycle occurring within the floodplain and with great trophic importance for the aquatic environment, among other species of economic interest and exploited by artisanal fishing. The river-floodplain systems form aquatic and transitional habitats that favor the maintenance of considerable biodiversity, favoring the emergence of nursery areas (Luz *et al.*, 2009). During floods, these marginal lagoons are flooded, forming habitats with distinct hydrological characteristics, with more lentic waters, the presence of aquatic macrophytes, and riparian vegetation on the banks, offering shelter and food (phytoplankton, zooplankton, periphyton, benthos) in abundance for the fish young (Mounic-Silva & Leite, 2013; Zacardi *et al.*, 2020; Oliveira L. *et al.*, 2020).

Regarding the taxonomic composition of the community, a predominance of larvae from some groups such as Clupeiformes and Gobiiformes was observed, and greater species richness was recorded for Characiformes and Siluriformes, in agreement with the diversity pattern for the Amazon basin and its tributaries (Lima & Araújo-Lima, 2004; Oliveira & Ferreira, 2008; Barletta *et al.*, 2010; Zacardi *et al.*, 2019). However, the composition and number of species varied between water bodies. This may be associated with the ecological characteristics of each group or species, making the low occurrence of larvae and/or the absence of some species in the samples common. The favorable conditions of oxygenation, depth, habitat complexity, foraging, and lentic environment offer advantages to small Characiformes (e.g., Hemiodontidae) and disfavor the presence of Siluriformes larvae which in general are bottom species and found mainly in river channels (Ferreira *et al.*, 2016; Barthem *et al.*, 2017; Chaves *et al.*, 2017). The ichthyoplankton community collected in this study is considered common, with some species considered abundant in lagoons and river channels in the Lower Amazon and adjacent areas, directly reflecting on the structure of local adult fish assemblages and their life histories (Zacardi *et al.*, 2017; Thompson *et al.*, 2019; Ponte *et al.*, 2019).

For example, the species *Microphilypnus* (Gobiiformes) have a long reproductive period, early sexual maturity, and a rapid generation replacement rate (Suzuki, 2016; Zacardi *et al.*, 2019; Oliveira C. *et al.*, 2020). For these reasons, it is a typical specie of opportunistic life history strategy, occupying the dominant population position in the larval stages during the reproductive period (Zacardi *et al.*, 2019). Thus, the results indicated that the structure of the fish larvae community was also determined by the reproductive strategies and induced by the increase in the water level, which will probably guarantee a sufficient food supply and adequate environmental conditions for their descendants (Álvarez *et al.*, 2012; Mendonça *et al.*, 2015; Picapedra *et al.*, 2018), indicating the importance of river-lagoon connectivity for the community structure (Yi *et al.*, 2010; Ponte *et al.*, 2019; Melo-Silva *et al.*, 2022).

The highest densities of larvae captured at night and in the subsurface of the water column, configure a behavioral mechanism related to ontogenetic stages, food availability (nocturnal zooplankton migration), visual acuity, swimming capacity, strategy against predators or even to reduce intra and interspecific competition (Utne-Palm, 2010; Santin, 2012; Mendonça *et al.*, 2015; Picapedra *et al.*, 2018; Rosa *et al.*, 2019). This behavioral mechanism is one of the most successful mechanisms in the life history of many fish species. (Picapedra *et al.*, 2015; Zacardi, 2015). Thus, they allow these individuals to fulfill their ecological and physiological needs in the environment (Pareja-Carmona *et al.*, 2014; Picapedra *et al.*, 2018). Furthermore, the search for food and the escape from visual predators are some of the most important factors for the occurrence of this behavior, with the photoperiod being a stimulus for this biological event (Picapedra *et al.*, 2015; Zacardi *et al.*, 2017).

The marked presence of flexion and pre-flexion developmental stages for the species analyzed in this study suggests that the lagoons must safely allow for growth and recruitment maximization. The presence of larvae in less developed stages (yolk-sac larval and pre-flexion), indicates that reproduction sites, if they do not occur in the lagoon itself, possibly occur on the banks of the river channels, close to the entrance of the lagoons, mainly of migratory species. The reproduction of most fish that inhabit floodplains is highly seasonal, coincides with periods of high rainfall, and is closely related to water level fluctuations and flooding phases (Cantanhêde *et al.*, 2016; Oliveira & Queiroz, 2017; Serrão *et al.*, 2019; Zacardi *et al.*, 2020; Carvalho *et al.*, 2021). This ensures the access of larvae to suitable feeding and sheltering places and, consequently, success in recruiting and renewing stocks.

The Tapajós and Trombetas rivers have a long history of anthropic disturbances, including increased turbidity (sediment carry-over), pollution and contamination by tailings (Bauxite mining), mercury (illegal mining) among others, which modify the environmental characteristics and ecosystem functions (Nevado *et al.*, 2010; Sodré *et al.*, 2015; Freitas *et al.*, 2019; Noronha Filho *et al.*, 2021; Menezes *et al.*, 2022; Montes *et al.*, 2022). However, the presence of eggs, richness, and abundance of recorded larvae indicates the resilience of the local ichthyofauna. Thus, the ichthyofaunistic diversity and the size of natural stocks depend, to a large extent, on the conservation and integrity of these environments, which are crucial to enable the maintenance of fisheries, the life cycle of fish, and the abundance of species. In this way, it is recommended the establishment of a continuous monitoring system in the two rivers, their tributaries, and flood-prone marginal areas as an essential element of subsidy of data and information, fundamental requirements to guarantee safe interventions, and marking of possible mitigation measures.

We found that fish larvae were present in all lagoons sampled, with heterogeneous variation in richness and abundance. Our findings showed that the limnological conditions did not correlate and were not sufficient to determine patterns in the structure and distribution of ichthyoplankton in the analyzed period, since the lagoons presented similar characteristics during the flood. Although additional work is needed monthly, overall, the ichthyoplankton community in the lower reaches of the Tapajós and Trombetas rivers was revealed. Therefore, it is particularly important to study the patterns of fish larval assemblages and identify key functional groups with specific environmental sensitivities, as an alternative to formulating adequate policies to guarantee the protection and correct fisheries management for the region.

## CONCLUSION

Despite the short seasonal scale, our results highlight the role of marginal lagoons as breeding, nursery, and growth sites for fish species of different ecological and migratory categories, confirmed by the presence of larvae in all stages of early development. Although the exclusive occurrence of species both in the lagoons of the Tapajós river, and only in the lakes of the Trombetas river, significant differences in composition were not observed. These biotopes are essential for maintaining the current levels of recruitment of fish species that support fisheries in the region and fundamental species as links in the aquatic trophic chain. Complementary studies should be carried out to better understand the reproductive strategy of the fish and



the specific periods and places used for spawning. We call attention to the need to maintain the integrity of the lakes and the natural flow regime, aiming not only at the conservation of diversity but at a sustainability model that satisfactorily meets the level of production of fish stocks, which are, from a perspective of many impacts and anthropic changes along the basins, with direct repercussions on the river-lagoon flooding system.

## ACKNOWLEDGEMENTS

The authors would like to thank the company Salvação Empreendimentos Imobiliários Ltda - SISA for the financial support, through the Fundação de Integração Amazônica - FIAM, and everyone who in some way collaborated with this work, especially profa. Dra. Dávia Talgatti and his students Marcio Vieira and Edivan Tavares for all their assistance in the field expeditions in the lagoons of the Trombetas River.

## REFERENCES

- Ahlstrom, E.H. & Ball, O.P. 1954. Description of eggs and larvae of jack mackerel (*Trachurus symmetricus*) and distribution and abundance of larvae in 1950 and 1951. *Fishery Bulletin*, 56: 209-245.
- Ahlstrom, E.H. & Moser, H.G. 1976. Eggs and larvae offishes and their role in systematic investigations and in fisheries. *Revue des Travaux de l'Institut des Pêches Maritime*, 40(3): 379-398.
- Álvarez, I.; Catalán, I.A.; Jordi, A.; Palmer, M.; Sabatés, A.; Basterretxea, G. 2012. Drivers of larval fish assemblage shift during the spring-summer transition in the coastal Mediterranean. *Estuarine Coastal and Shelf Science*, 97: 127-135. doi.org/10.1016/j.ecss.2011.11.029
- Amorim, E.; Ramos, S.; Elliott, M.; Franco, A. & Bordalo, A.A. 2017. Habitat loss and gain: influence on habitat attractiveness for estuarine fish communities. *Estuarine Coastal and Shelf Science*, 197: 244-257. doi.org/10.1016/j.ecss.2017.08.043
- Araújo, R.B. 2009. Desova e fecundidade em peixes de água doce e marinhos. *Revista de Biologia e Ciências da Terra*, 9(2): 24-31.
- Araújo, I.B.; Lima, A.M.M. & Santos, C.A. 2015. Caracterização hidrogeomorfológica das paisagens componentes da bacia hidrográfica do rio Tapajós, *Enciclopédia Biosfera*, 11(2): 3301-3327. doi: 10.18677/Enciclopedia\_Biosfera\_2015\_046
- Barletta, M.; Jaureguizar, A.J.; Baigun, C.; Fontoura, N.F., Agostinho, A.A.; (...) & Corrêa, M. F. M. 2010. Fish and aquatic habitat conservation in South America: a continental overview with emphasis on neotropical systems. *Journal of Fish Biology*, 76(9): 2118-2176. doi.org/10.1111/j.1095-8649.2010.02684.x
- Barthem, R.B.; Goulding, M.; Leite, R.G.; Cañas, C.; Forsberg, B.; (...) & Mercado, A. 2017. Goliath catfish spawning in the far western Amazon confirmed by the distribution of mature adults, drifting larvae and migrating juveniles. *Scientific Reports*, 7(1): 41784. doi.org/10.1038/srep41784
- Beltrão, H. & Soares, M.G.M. 2018. Variação temporal na composição da ictiofauna do lago e igarapés da Reserva de Desenvolvimento Sustentável RDS-Tupé, Amazônia Central. *Biota Amazônia*, 8(1): 34-42. doi.org/10.18561/2179-5746/biotaamazonia.v8n1p34-42
- Betancur-R, R.; Wiley, E.O.; Arratia, G.; Acero, A.; Bailly, N.; Miya, M.; Lecointre, G. & Ortí, G. 2017. Phylogenetic classification of bony fishes. *BMC Evolutionary Biology*, 17(162): 1-40. doi.org/10.1186/s12862-017-0958-3
- Cajado, R.A.; Oliveira, L.S.; Silva, F.K.S.; Zacardi, D.M. & Andrade, M.C. 2022. Effects of anomalous climatic events on the structure of fish larvae assemblages in the eastern Amazon. *Frontiers in Environmental Science*, 10: 1064170. doi.org/10.3389/fenvs.2022.1064170
- Camargo, S.A.F. & Camargo, T.R.L. 2012. Direito, política e manejo pesqueiro na bacia amazônica. São Carlos: Rima.
- Cantanhêde, L.G.; Carvalho, I.F.S.; Santos, N.B. & Almeida, Z.S. 2016. Biologia reprodutiva do *Hassar affinis* (Pisces: Siluriformes, Doradidae), Lago de Viana, Baixada Maranhense, Maranhão, Brasil. *Acta Amazonica*, 46(2): 219-226. doi.org/10.1590/1809-4392201503844

- Carvalho, I.F.S.; Cantanhêde, L.G.; Diniz, A.L.C.; Carvalho-Neta, R.N.F. & Almeida, Z.S. 2021. Reproductive biology of seven fish species of commercial interest at the Ramsar site in the Baixada Maranhense, Legal Amazon, Brazil. *Neotropical Ichthyology*, 19(2): e200067. doi.org/10.1590/1982-0224-2020-0067
- Castello, L. & Macedo, M.N. 2016. Large-scale degradation of Amazonian freshwater ecosystems. *Global Change Biology*, 22: 990-1007. doi.org/10.1111/gcb.13173
- Castro, R.J.; Nakatani, K.; Bialetzki, A.; Sanches, P.V. & Baumgartner, G. 2002. Temporal distribution and composition of the ichthyoplankton from Leopoldo's Inlet on the Upper Paraná River floodplain (Brazil). *Journal of Zoology*, 256(4): 437-443. doi.org/10.1017/S095283690200047X
- Chaves, C.S.; Carvalho, J.S.; Ponte, S.C.S.; Ferreira, L.C. & Zacardi, D.M. 2017. Distribuição de larvas de Pimelodidae (Pisces, Siluriformes) no trecho inferior do Rio Amazonas, Santarém, Pará. *Scientia Amazonia*, (6)1: 19-30.
- Coutinho, E.C.; Rocha, E.J.P.; Lima, A.M.M. & Ribeiro, H.M.C. 2019. Variability of the Hydrological Regime of the Amazon Basin. *Boletim de Geografia*, 37(2): 129-147. doi.org/10.4025/bolgeogr.v37i2.38424
- Ferreira, E.J. 1993. Composição, distribuição e aspectos ecológicos da ictiofauna de um trecho do rio Trombetas, na área de influência da futura UHE Cachoeira Porteira, Estado do Pará, Brasil. *Acta Amazonica*, 23(14): 1-89. doi.org/10.1590/1809-43921993235089
- Ferreira, L.C.; Ponte, S.C.S.; Silva, A.J.S. & Zacardi, D.M. 2016. Distribuição de larvas de *Hypophthalmus* (Pimelodidae, Siluriformes) e sua relação com os fatores ambientais no Baixo Amazonas, Pará. *Brazilian Journal of Fisheries Engineering*, 9(2): 86-106. doi.org/10.18817/repesca.v9i2.1054
- Freitas, J.S.; Lacerda, E.M.C.B.; Rodrigues-Júnior, D.; Corvelo, T.C.O.; Silveira, L.C.L.; Pinheiro, M.C.N. & Souza, G.S. 2019. Mercury exposure of children living in Amazonian villages: influence of geographical location where they lived during prenatal and postnatal development. *Anais da Academia Brasileira de Ciências*, 91: e20180097. doi.org/10.1590/0001-3765201920180097.
- Fricke, R.; Eschmeyer, W.N. & Van der Laan, R. 2019. Eschmeyer's Catalog of fishes: genera, species, references [online]. Retrieved in 2022, November 10, available in: <http://researcharchive.calacademy.org/research/ichthyology/catalog/fishcatmain.asp>
- Gao, L.; Cheng, F.; Song, Y.; Jiang, W.; Feng, G.; Luo, Y. & Xie, S. 2018. Patterns of larval fish assemblages along the direction of freshwater input within the southern branch of the Yangtze Estuary, China: implications for conservation. *Journal of Freshwater Ecology*, 33, 97-114. doi.org/10.1080/02705060.2018.1426503
- Gotelli, N.J. & Ellison, A.M. 2013. EcoSimR 1.00 [online]. Retrieved in 2022, November 01, available in: <http://www.uvm.edu/~ngotelli/EcoSim/EcoSim.html>
- Goulding, M.; Venticinque, E.; Ribeiro, M.L.B.; Barthem, R.B.; Leite R.G.; Petry, P.; Silva-Júnior, U.L.; Ferraz, P.S. & Cañas, C. 2019. Ecosystem-based management of Amazon fisheries and wetlands. *Fish and Fisheries*, 20(1): 138-158. doi.org/10.1111/faf.12328
- Hales, J. & Petry, P. 2015. Tapajós-Juruena Freshwater Ecoregion [online]. Retrieved in 2022, November 11, available in: [http://www.feow.org/ecoregions/details/tapajos\\_juruena](http://www.feow.org/ecoregions/details/tapajos_juruena)
- Hurd, L.E.; Sousa, R.G.C.; Siqueira-Souza, F.K.; Cooper, G.J.; Kahn, J.R. & Freitas, C.E.C. 2016. Amazon floodplain fish communities: Habitat connectivity and conservation in a rapidly deteriorating environment. *Biological Conservation*, 195: 118-127. doi.org/10.1016/j.biocon.2016.01.005
- Junk, W.J.; Piedade, M.T.F.; Schöngart, J. & Wittmann, F. 2012. A classification of major natural habitats of Amazonian white-water river floodplains (várzeas). *Wetlands Ecology and Management*, 20: 461-475. doi.org/10.1007/s11273-012-9268-0
- Lima, A.C. & Araújo-Lima, C.A.R.M. 2004. The distribution of larval and juveniles fishes in Amazonian rivers of the different nutrients status. *Freshwater Biology*, 49: 787-800. doi.org/10.1111/j.1365-2427.2004.01228.x
- Luz, S.C.S.; El-Deir, A.C.A.; França, E.J. & Severi, W. 2009. Fish assemblage structure in a marginal lake disconnected from the submedium São Francisco River, Pernambuco. *Biota Neotropica*, 9(3): 117-129.

doi.org/10.1590/S1676-06032009000300011

Melo-Silva, M.; Silva, J.C. & Bialezki, A. 2022. Community structure of fish larvae in different biotopes of a neotropical river. *Community Ecology*, 23: 1-12. doi.org/10.1007/s42974-021-00066-3

Mendel Junior, A.P. 2022. Levantamentos geodésicos altimétricos por satélite e análises estatísticas com impacto nas análises fluviométricas, pluviométricas e de variáveis hidrometeorológicas na parte meridional da Bacia do rio Trombetas-PA. [Dissertação de Mestrado]. Belém (PA): Instituto de Geociências da Universidade Federal do Pará.

Mendonça, M.M.; Picapedra, P.H.S.; Ferronato, M.C. & Sanches, P.V. 2015. Diel vertical migration of predators (planktivorous fish larvae) and prey (zooplankton) in a tropical lagoon. *Iheringia, Serie Zoology*, 105, 174-183. doi.org/10.1590/1678-476620151052174183

Meneses, H.N.M.; Costa, M.O.; Basta, P.C.; Morais, C.G.; Pereira, R.J.B.; Souza, S.M.S. & Hacon, S.S. 2022. Mercury Contamination: A Growing Threat to Riverine and Urban Communities in the Brazilian Amazon. *International Journal of Environmental Research and Public Health*, 19: 2816. doi.org/10.3390/ijerph19052816

Mounic-Silva, C.E. & Leite, R.G. 2013. Abundance of young-of-the-year migratory Characiforms in floodplain areas of the middle Solimões Amazon River at flooding 2007/2008. *Journal of Applied Ichthyology*, 29: 118-124. doi.org/10.1111/j.1439-0426.2012.02047.x

Nakatani, K.; Agostinho, A.A.; Baumgartner, G.; Bialezki, A.; Sanches, P.V.; Makrakis, M.C. & Pavanelli C.S. 2001. *Ovos e larvas de peixes de água doce: desenvolvimento e manual de identificação*. Maringá: EDUEM.

Nevado, J.B.; Martín-Doimeadios, R.R.; Bernardo, F.G.; Moreno, M.J.; Herculano, A.M.; Nascimento, J.L.M. & Crespo-López, M.E. 2010. Mercury in the Tapajós River basin, Brazilian Amazon: A review. *Environment International*, 36(6): 593-608. doi.org/10.1016/j.envint.2010.03.011.

Noronha-Filho, F.A.; Queiroz, T.K.L.; Cavalcante, D.O.; Góes, J.P.P. & Lima, M.O. 2021. Acúmulo de mercúrio em sedimentos de fundo da reserva biológica do rio Trombetas (REBIO), cidade de Oriximiná, Brasil. *Revista Ibero Americana de Ciências Ambientais*, 12(5): 378-386. doi.org/10.6008/CBPC21796858.2021.005.0031

Oliveira, C.; Avelino, G.S.; Abe, K.T.; Mariguela, T.C.; Benine, R.C.; Ortí, G.; Vari, R.P. & Castro, R.M.C. 2011. Phylogenetic relationships within the speciose family Characidae (Teleostei: Ostariophysi: Characiformes) based on multilocus analysis and extensive ingroup sampling. *BMC Evolutionary Biology*, 11(275): 1-25. doi.org/10.1186/1471-2148-11-275

Oliveira, C.C.; Suzuki, M.A.L.; Oliveira, L.S. & Zacardi, D.M. 2020. Descrição do desenvolvimento inicial e distribuição temporal de larvas e juvenis de *Microphilypnus tapajosensis* em um reservatório na Amazônia Oriental. *Ciência & Natura*, 42, e49, doi.org/10.5902/2179460X41542

Oliveira, E.C. & Ferreira, E.J.G. 2008. Spawning areas, dispersion and microhabitats of fish larvae in the Anavilhanas Ecological Station, rio Negro, Amazonas State, Brazil. *Neotropical Ichthyology*, 6(4): 559-566. doi.org/10.1590/S1679-62252008000400003

Oliveira, J.C. & Queiroz, H.L. 2017. Life history traits of two dwarf cichlids species in the white waters of the Amazonian floodplain. *Environmental Biology of Fishes*, 100: 1497-1505. doi.org/10.1007/s10641-017-0660-8

Oliveira, L.S.; Cajado, R.A.; Santos, L.R.B.; Suzuki, M.A.L. & Zacardi, D.M. 2020. Bancos de macrófitas aquáticas como locais de desenvolvimento das fases iniciais de peixes em várzea do Baixo Amazonas. *Oecologia Australis*, 24(3): 644-660. doi.org/10.4257/oeco.2020.2403.09

Oliveira, L.S.; Cajado, R.A.; Santos, L.R.B. & Zacardi, D.M. 2022. Structure of the ichthyoplankton community in a Neotropical floodplain lake affected by environmental degradation. *Anais da Academia Brasileira de Ciências*, 94: e20201598. doi.org/10.1590/0001-376520220201598.

Orsi, M.L.; Almeida, F.S.; Swarça, A.C.; ClaroGarcia, A.; Vianna, N.C.; Garcia, D.A.Z. & Bialezki, A. 2016. *Ovos, larvas e juvenis dos peixes da Bacia do rio Paranapanema: uma avaliação para conservação*. Assis: Triunfal Gráfica e Editora.

Ortega, J.C.G.; Dias, R.M.; Petry, A.C.; Oliveira, E.F. & Agostinho, A.A. 2015. Spatio-temporal

- organization patterns in the fish assemblages of a Neotropical floodplain. *Hydrobiologia*, 745(1):31-41. doi.org/10.1007/s10750-014-2089-9
- Pareja-Carmona, M.I.; Jiménez-Segura, L.F. & Ochoa-Orrego, L.E. 2014. Variación espacio-temporal de las larvas de tres especies de peces migratorios en el cauce del río Magdalena (Colombia), durante el ciclo hidrológico 2006-2007. *Actualidades Biológicas*, 36(100): 33-38. doi.org/10.17533/udea.acbi.329103
- Pereira, D.V.; Arantes, C.C.; Sousa, K.N.S. & Freitas, C.E.C. 2023. Relationships between fishery catch rates and land cover along a longitudinal gradient in floodplains of the Amazon River. *Fisheries Research*, 258: 106521. doi.org/10.1016/j.fishres.2022.106521
- Picapedra, P.H.S., Lansac-Tôha, F.A. & Bialetzki, A., 2015. Diel vertical migration and spatial overlap between fish larvae and zooplankton in two tropical lakes, Brazil. *Brazilian Journal of Biology*, 75(2): 352-361. doi.org/10.1590/1519-6984.13213
- Picapedra, P.H.S.; Sanches, P.V. & Lansac-Tôha, F.A. 2018. Effects of light-dark cycle on the spatial distribution and feeding activity of fish larvae of two co-occurring species (Pisces: Hypophthalmidae and Sciaenidae) in a Neotropical floodplain lake. *Brazilian Journal of Biology*, 78(4): 763-772. doi.org/10.1590/1519-6984.179070
- Ponte, S.C.S.; Oliveira, L.S. & Zacardi, D.M. 2019. Variação temporal de larvas de peixes de um lago de inundação como subsídio à gestão ambiental. *Journal of Applied Hydro-Environment and Climate*, 1(1): 1-13.
- Prestes, L.; Barthem, R.; Mello-Filho, A.; Anderson, E.; Correa, S.B.; Couto, T.B.D.; (...) & Goulding, M. 2022. Proactively averting the collapse of Amazon fisheries based on three migratory flagship species. *Plos One*, 17(3): e0264490. doi.org/10.1371/journal.pone.0264490
- Reis, A.R.R.; Santos, L.R.B.; Oliveira, L.S. & Zacardi, D.M. 2020. Temporal variation of Clupeiformes larvae (Pisces, Teleostei) in várzea lake in the Lower Amazon, Pará, Brazil. *Brazilian Journal of Development*, 6(9): 72877-72887. doi.org/10.34117/bjdv6n9-657
- Rosa, R.R.; Silva, J.C. & Bialetzki, A. 2019. Long-term monitoring of potamodromous migratory fish larvae in an undammed river. *Marine and Freshwater Research*, 71(3): 384-393. doi.org/10.1071/MF18412
- Sahoo, P.K.; Guimarães, J.T.F.; Souza-Filho, P.W.M.; Bozelli, R.L.; Araujo, L.R.; (...) & Dall'Agnol, R. 2017. Limnological characteristics and planktonic diversity of five tropical upland lakes from Brazilian Amazon. *Annales de Limnologie - International Journal of Limnology*, 53: 467-483. doi.org/10.1051/limn/2017026
- Santin, M. 2012. Ontogenia e seletividade alimentar de larvas e juvenis de três espécies de peixes Neotropicais de diferentes categorias tróficas. [Dissertação de Mestrado]. Maringá (PR): Centro de Ciências Biológicas da Universidade Estadual de Maringá.
- Serrão, E.M.; Braga, T.M.P.; Coelho, Y.K.S.; Campos, D.P.F.; Santos, A.A. & Zacardi, D.M. 2019. Conhecimento tradicional dos pescadores sobre o comportamento reprodutivo dos peixes em um lago de inundação no Oeste do Pará, Brasil. *Sociedade & Natureza*, 3: 1-21. doi.org/10.14393/SN-v31-2019-45133
- Silva, D.S.; Lucotte, M.; Roulet, M.; Poirier, H.; Mergler, D. & Crossa, M. 2006. Mercúrio nos peixes do rio Tapajós, Amazônia Brasileira. *Revista de Gestão Integrada em Saúde do Trabalho e Meio Ambiente*, 1(1): 1-31.
- Montes, C.S.; Ferreira, M.A.P.; Giarrizzo, T.; Amado, L.L. & Rocha, R.M. 2022. The legacy of artisanal gold mining and its impact on fish health from Tapajós Amazonian region: A multi-biomarker approach. *Chemosphere*, 287: 132263. doi.org/10.1016/J.CHEMOSPHERE.2021.132263
- Silvano, R.A.M. 2020. *Fish and fisheries in the Brazilian Amazon: People, ecology and conservation in black and clear water rivers*. Cham: Springer Nature Switzerland.
- Siqueira-Souza, F.K.; Freitas, C.E.C.; Hurd, L.E. 2016. Amazon floodplain fish diversity at different scales: do time and place really matter? *Hydrobiologia*, 776, 99-110. doi.org/10.1007/s10750-016-2738-2
- Soares, B.E. 2015. O assoreamento por rejeito de bauxita e sua relação com a diversidade taxonômica e filogenética: um estudo da ictiofauna de um lago da Amazônia Central (Lago Batata, PA). [Dissertação de

Mestrado]. Rio de Janeiro (RJ): Instituto de Biologia da Universidade Federal do Rio de Janeiro.

Soares, B.E.; Marques, R.O.; Barros, T.; Rosa, D.C.O.; Silva, N.C.; Silva, J.C. & Caramaschi, E.P. 2015. Lago Sapucaá (Oriximiná, PA): os peixes e o homem em área de mineração. *Boletim Sociedade Brasileira de Ictiologia*, 116: 25-30.

Sodré, E.O.; Lopes, P.M.; Figueiredo-Barros, M.P.; Roland, F.; Esteves, F.A. & Bozelli, R.L. 2015. The effects of mining tailings and flood pulse on zooplankton in an Amazonian floodplain environment (Batata Lake, Pará, Brazil). *Boletim do Museu Paraense Emílio Goeldi. Ciências Naturais*, 10(2): 247-259. doi.org/10.46357/bcnaturais.v10i2.483

Sousa, R.G.C.; Freitas, H.C.P.; Zacardi, D.M.; Faria-Junior, C.H. 2021. Effects of river dams on the fish guilds in the northwest region of the Brazilian Amazon. *Fisheries Research*, 243: 106091. doi.org/10.1016/j.fishres.2021.106091

Souza-Filho, E.E. & Stevaux, J.C. 1997. Geologia e geomorfologia do complexo rio Baía, Curutuba, Ivinheima. In: Vazzoler, A.E.A.M.; Agostinho, A.A. & Hahn, N.S. (Eds). *A planície de inundação do alto rio Paraná: aspectos físicos, biológicos e socioeconômicos*. Maringá: EDUEM, 3-46.

Starr, S.M.; Benstead, J.P. & Sponseller, R.A. 2014. Spatial and temporal organization of macroinvertebrate assemblages in a lowland floodplain ecosystem. *Landscape Ecology*, 29: 1017-1031. doi.org/10.1007/s10980-014-0037-8

Suzuki, M.A.L. 2018. Composição taxonômica e distribuição espaço-temporal da assembleia de larvas de peixes no reservatório de Curuá-Una, Santarém, Pará. [Dissertação de Mestrado]. Santarém (PA): Instituto de Ciências e Tecnologia das Águas da Universidade Federal do Oeste do Pará.

Thomaz, S.M.; Bini, L.M. & Bozelli, R.L. 2007. Floods increase similarity among aquatic habitats in river-floodplain systems. *Hydrobiologia*, 579: 1-13. doi.org/10.1007/s10750-006-0285-y

Thompson, A.R.; Harvey, C.J.; Sydeman, W.J.; Barceló, C.; Bograd, S.J.; Brodeur, R.D.; (...) & Williams, D.G. 2019. Indicators of pelagic forage community shifts in the California Current Large Marine Ecosystem, 1998-2016. *Ecological Indicator*, 105: 215-228. doi.org/10.1016/j.ecolind.2019.05.057

Tomasella, J.; Pinho, P.F.; Borma, L.S.; Marengo, J.A.; Nobre, C.A.; (...) & Cuartas, L.A. 2013. The droughts of 1997 and 2005 in Amazonia: floodplain hydrology and its potential ecological and human impacts. *Climatic Change*, 116(3): 723-746, doi.org/10.1007/s10584-012-0508-3

Tondato, K.K.; Mateus, L.A.F. & Ziober, S.R. 2010. Spatial and temporal distribution of fish larvae in marginal lagoons of Pantanal, Mato Grosso State, Brazil. *Neotropical Ichthyology*, 8:123-134. doi.org/10.1590/S1679-62252010005000002

Utne-Palm, A.C.; Salvanes, A.G.; Currie, B.; Kaartvedt, S.; Nilsson, G.E.; (...) & Gibbons, M.J. 2010. Trophic Structure and Community Stability in an Overfished Ecosystem. *Science*, 16; 329(5989): 333-336. doi.org/10.1126/science.1190708.

Vorsatz, L.D.; Patrick, P. & Porri, F. 2021. Ecological scaling in mangroves: the role of microhabitats for the distribution of larval assemblages. *Estuarine Coastal and Shelf Science*, 253: 107318. doi.org/10.1016/j.ecss.2021.107318

Yi, Y.; Yang, Z. & Zhang, S. 2010. Ecological influence of dam construction and river-lake connectivity on migration fish habitat in the Yangtze River basin, China. *Procedia Environmental Science*, 2: 1942-1954. doi.org/10.1016/j.proenv.2010.10.207

Zacardi, D.M. 2020. A pesca artesanal em áreas de inundação no Baixo Amazonas, Pará: técnicas de captura e composição pesqueira. In: Mendes, L.M. (Org). *Aquicultura e Pesca: adversidades e resultados*. Ponta Grossa: Atena Editora. 1-16.

Zacardi, D.M. 2015. Variação e abundância do ictioplâncton em canais de maré no Extremo Norte do Brasil. *Biota Amazônia*, 5: 43-52.

Zacardi, D.M.; Bittencourt, S.C.S. & Queiroz, H.L. 2020. Recruitment of migratory Characiforms in the different wetland habitats of Central Amazonia: Subsidies for sustainable fisheries management. *Journal of Applied Ichthyology*, 36(2): 431-438. doi.org/10.1111/jai.14040

Zacardi, D.M. & Ponte, S.C.S. 2021. Seasonality determines patterns of composition and abundance of

- ichthyoplankton in Maicá Lake, Eastern Amazon, *Pan-American Journal of Aquatic Sciences*, 16(1): 37-51.
- Zacardi, D.M.; Ponte, S.C.S.; Ferreira, L.C.; Lima, M.A.S.; Silva, A.J.S. & Chaves, C.S. 2017. Diversity and spatio-temporal distribution of the ichthyoplankton in the lower Amazon River, Brazil. *Biota Amazônia*, 7(2): 12-20. doi.org/10.18561/2179-5746/biotaamazonia.v7n2p12-20
- Zacardi, D.M.; Ponte, S.C.S.; Oliveira, L.S.; Cajado, R.A. & Santos, L.R.B. 2019. Área de desova e recrutamento para peixes de interesse comercial no Baixo Amazonas: implicações para conservação. In: Ribeiro, J.C. & Santos, C.A. (Org). *A face multidisciplinar das ciências agrárias 2*. Ponta grossa: Atena Editora. 25-38.